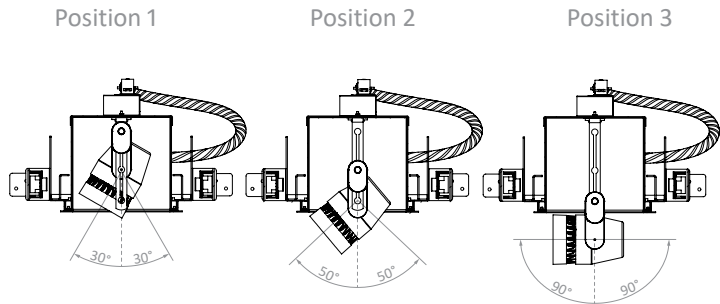
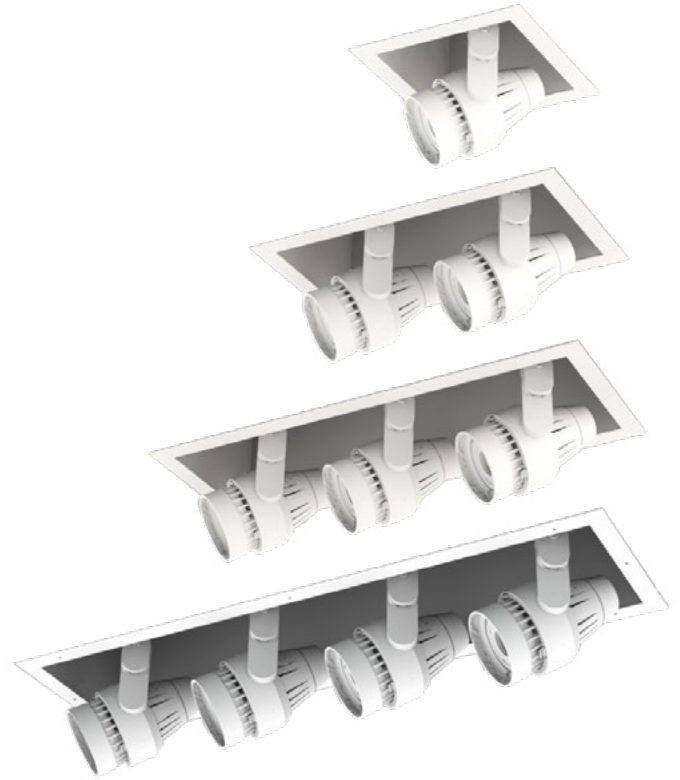
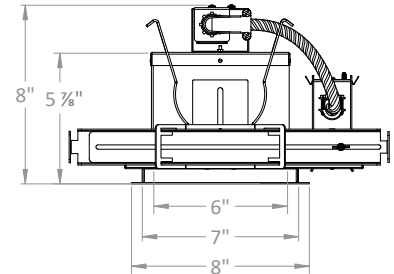
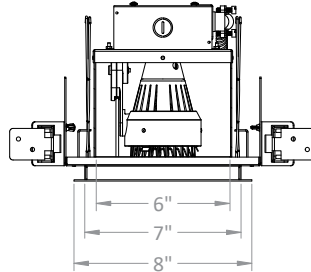
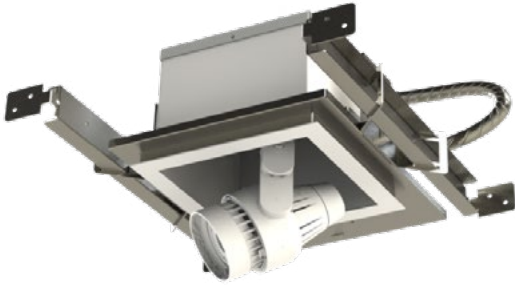


- 120 - 277 V standard
- 0-10, TRIAC and ELV dimming
- Emergency backup available*
- Passively cooled fixtures
- 3 self-locking aiming height positions
- 0-90° vertical tilt; 360° rotation
- Modular individually specifiable optics
- 50,000 hours (L70)
- RoHS-compliant
- Certified to UL standards for dry locations
- Rated for IC and non-IC use
- Designed for new construction ceilings only
- *MonoWhite color rendering enhancements available
- *90+ High CRI available.
To order, replace 'K' in CCT designation with 'h' in ordering code.
- Aiming



*Consult factory for lead time and availability

- Modular Fixture Weight (without modules): 7.5 lb
- Ceiling Cut-Out: 7 3/8" x 7 3/8"



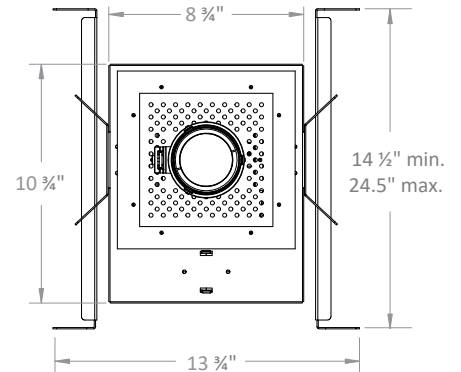
Ordering Information

Example: YPD11/Ym24/25/30K/2400/WH/WH/SL

Fixture	Module	Beam Spread	CCT	Lumens	Options + Accessories
YPD11	Ym24	COB-optic	22K - 2200K*	1400	Module Options TS - Tapered Snoot HL - Honeycomb Louver SL - Linear Spread SP - Prismatic Spread More Accessories Available Fixture Options EM - Emergency Backup
		15c	25K - 2500K*	1700	
		25c	27K - 2700K	2200	
		40c	30K - 3000K		
		60c	35K - 3500K*		
			40K - 4000K*		
			<i>MonoWhite (90 CRI)</i> 30m - 3000K 35m - 3500K*		

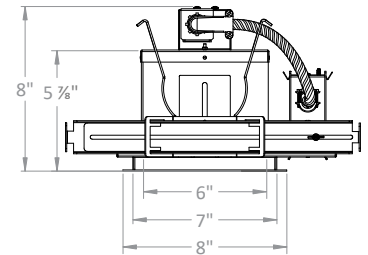
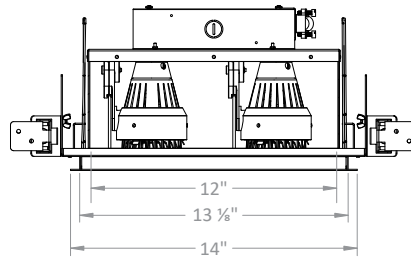
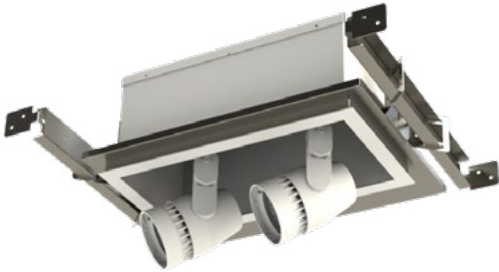
Finish

- Die-cast, Powder Coated
- WH / WH - White Module, Interior + Flange
- BK / BK - Black Module, Interior + Flange
- BK / WH* - Black Module + Interior, White Flange
- PW / PW* - Perfect White Module, Interior + Flange
- BK / PW* - Black Module + Interior, Perfect White Flange



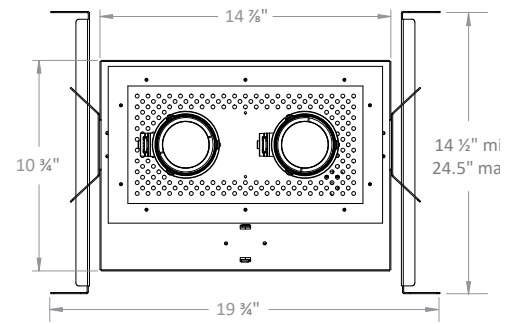
*Consult factory for lead time and availability

- Modular Fixture Weight (without modules): 11.25 lb
- Ceiling Cut-Out: 7 3/8" x 13 3/8"



Ordering Information Example: YPD12/Ym24/25-25/30K/2400/WH/WH/SL-SL

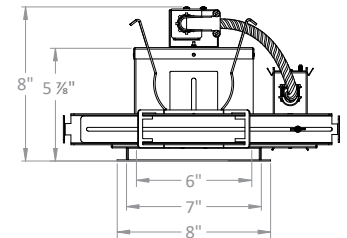
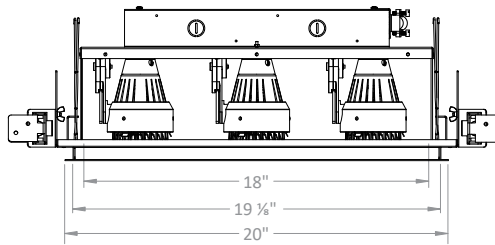
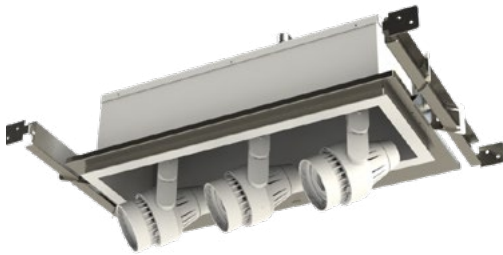
1		2				1		2	
Fixture	Module	Beam Spread	CCT	Lumens	Options + Accessories				
YPD12	Ym24	COB-optic	22K - 2200K*	1400	Module Options				
		15c	25K - 2500K*	1700	TS - Tapered Snoot				
		25c	27K - 2700K	2200	HL - Honeycomb Louver				
		40c	30K - 3000K		SL - Linear Spread				
		60c	35K - 3500K*		SP - Prismatic Spread				
			40K - 4000K*		More Accessories Available				
			MonoWhite (90 CRI)		Fixture Options				
			30m - 3000K		EM - Emergency Backup				
			35m - 3500K*						



- Finish**
- Die-cast, Powder Coated
 - WH / WH - White Module, Interior + Flange
 - BK / BK - Black Module, Interior + Flange
 - BK / WH* - Black Module + Interior, White Flange
 - PW / PW* - Perfect White Module, Interior + Flange
 - BK / PW* - Black Module + Interior, Perfect White Flange

*Consult factory for lead time and availability

- Modular Fixture Weight (without modules): 14 lb
- Ceiling Cut-Out: 7 3/8" x 19 3/8"



Ordering Information

Example: YPD13/Ym24/25-25-25/30K/2400/WH/WH/SL-SL-SL

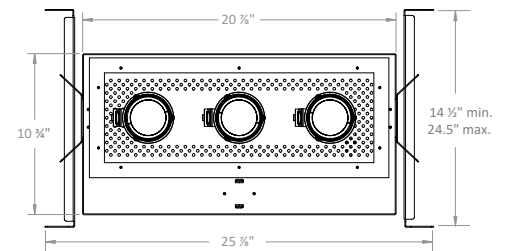


Fixture	Module	Beam Spread	CCT	Lumens
YPD13	Ym24	COB-optic	22K - 2200K*	1400
		15c	25K - 2500K*	1700
		25c	27K - 2700K	2200
		40c	30K - 3000K	
		60c	35K - 3500K*	
			40K - 4000K*	
			<i>MonoWhite (90 CRI)</i>	
			30m - 3000K	
			35m - 3500K*	

- Options + Accessories**
- Module Options
 - TS - Tapered Snoot
 - HL - Honeycomb Louver
 - SL - Linear Spread
 - SP - Prismatic Spread
 - More Accessories Available
 - Fixture Options
 - EM - Emergency Backup

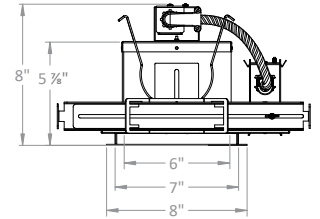
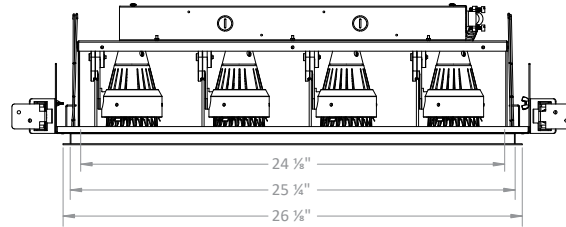
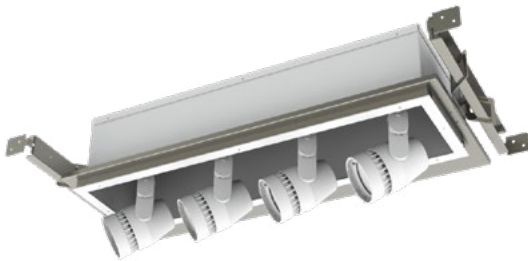
Finish

- Die-cast, Powder Coated
- WH / WH - White Module, Interior + Flange
- BK / BK - Black Module, Interior + Flange
- BK / WH* - Black Module + Interior, White Flange
- PW / PW* - Perfect White Module, Interior + Flange
- BK / PW* - Black Module + Interior, Perfect White Flange



*Consult factory for lead time and availability

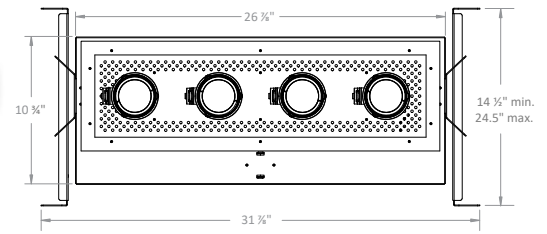
- Modular Fixture Weight (without modules): 15.5 lb
- Ceiling Cut-Out: 7 3/8" x 25 1/2"



Ordering Information

Example: YPD14/Ym24/25-25-25-30K/2400/WH/WH/SL-SL-SL

Fixture	Module	Beam Spread	CCT	Lumens	Options + Accessories
YPD14	Ym24	COB-optic	22K - 2200K*	1400	Module Options TS - Tapered Snoot HL - Honeycomb Louver SL - Linear Spread SP - Prismatic Spread More Accessories Available Fixture Options EM - Emergency Backup
		15c	25K - 2500K*	1700	
		25c	27K - 2700K	2200	
		40c	30K - 3000K		
		35K - 3500K*	35K - 3500K*		
		60c	40K - 4000K*		
			<i>MonoWhite (90 CRI)</i>		
			30m - 3000K		
			35m - 3500K*		



Finish

- Die-cast, Powder Coated
- WH / WH - White Module, Interior + Flange
- BK / BK - Black Module, Interior + Flange
- BK / WH* - Black Module + Interior, White Flange
- PW / PW* - Perfect White Module, Interior + Flange
- BK / PW* - Black Module + Interior, Perfect White Flange

*Consult factory for lead time and availability

PHOTOMETRIC DETAILS | baseline X output multiplier X cri-cct multiplier = final output

Ym24 COB OPTIC: Baseline data for 25 W, 2200 lumens, 80+ CRI, 3000K

Ym24/15c/30K/2200

- Input Power: 26.3 W
- Lumens: 1906 lm
- Efficacy: 72.6 lm/W
- Beam Angle: 18.6°
- Field Angle: 47.9°

∠	0°	45°	90°
0°	8373	8373	8373
5°	6746	6815	6805
10°	3908	3891	3745
15°	2018	1992	1859
20°	1223	1201	1119
25°	834	812	742
30°	588	568	507
35°	411	397	342
40°	286	277	229
45°	195	190	153

Ym24/25c/30K/2200

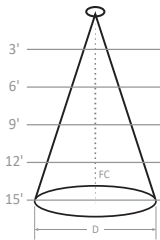
- Input Power: 25.4 W
- Lumens: 2382 lm
- Efficacy: 93.8 lm/W
- Beam Angle: 23.5°
- Field Angle: 60.7°

∠	0°	45°	90°
0°	7024	7024	7024
5°	6234	6172	6059
10°	4289	4284	4155
15°	2490	2574	2487
20°	1484	1565	1552
25°	996	1039	1051
30°	713	744	762
35°	516	541	562
40°	378	399	418
45°	279	295	312

Ym24/40c/30K/2200

- Input Power: 25.4 W
- Lumens: 2146 lm
- Efficacy: 84.5 lm/W
- Beam Angle: 38.7°
- Field Angle: 86.6°

∠	0°	45°	90°
0°	3223	3223	3223
5°	3082	3084	3072
10°	2677	2673	2654
15°	2131	2122	2099
20°	1574	1568	1554
25°	1109	1111	1104
30°	771	780	780
35°	543	555	561
40°	393	404	412
45°	290	299	307



Height	Ym24/15c/30K/2200	Ym24/25c/30K/2200	Ym24/40c/30K/2200
3'	0.56' D; 651 FC	1.25' D; 546 FC	2.10' D; 251 FC
6'	1.11' D; 163 FC	2.50' D; 137 FC	4.21' D; 63 FC
9'	1.67' D; 72 FC	3.74' D; 61 FC	6.31' D; 28 FC
12'	2.23' D; 41 FC	4.99' D; 34 FC	8.42' D; 16 FC
15'	2.78' D; 26 FC	6.24' D; 22 FC	10.52' D; 10 FC

CRI-CCT MULTIPLIER

CRI	CCT	Multiplier	CRI	CCT	Multiplier
8 (80+)	2200K	0.86	H (97+)	2700K	0.66
	2500K	0.91		3000K	0.71
	2700K	0.96		3500K	0.75
	3000K	1.00		4000K	0.77
	3500K	1.03	M (MonoWhite)	3000K	0.86
4000K	1.05	3500K		0.88	
9 (90+)	2200K	0.70			
	2500K	0.77			
	2700K	0.83			
	3000K	0.86			
	3500K	0.89			
4000K	0.91				

OUTPUT MULTIPLIER

Package	Optic	Multiplier
18 W 1700 lm Ym24 COB	15°	0.86
	25°	0.74
	40°	0.74
14 W 1400 lm Ym24 COB	15°	0.70
	25°	0.60
	40°	0.60

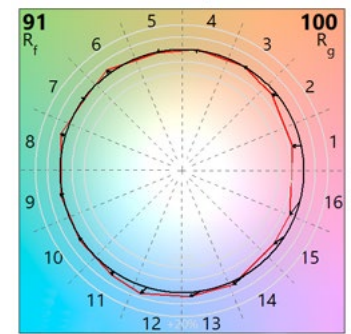
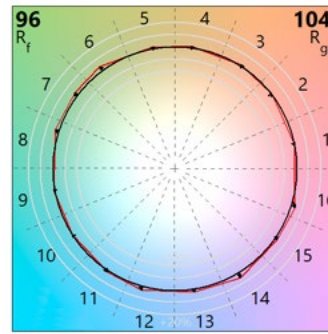
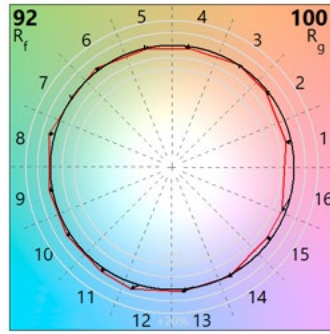
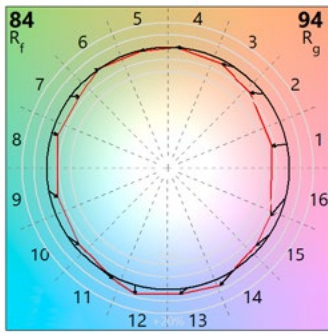
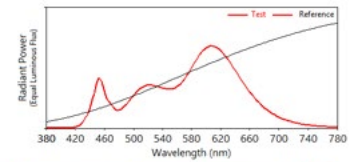
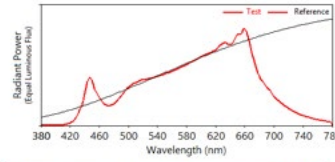
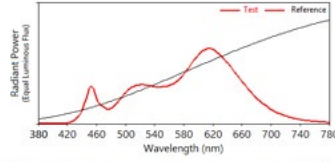
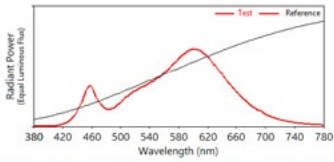
TM30 COLOR REPORTS

- 3000K with 80+ CRI
- $R_f = 84$; $R_g = 94$
- $R_A = 82$; $R_g = 11$

- 3000K with 90+ CRI
- $R_f = 92$; $R_g = 100$
- $R_A = 93$; $R_g = 56$

- 3000K with 97+ CRI
- $R_f = 96$; $R_g = 104$
- $R_A = 97$; $R_g = 98$

- 3000K with MonoWhite
- $R_f = 91$; $R_g = 100$
- $R_A = 91$; $R_g = 42$



Luxiance utilizes active cooling to remove heat from the LED system - allowing Solais LED lamps to operate cooler, resulting in superior life, light output, and performance.



Thermal Throttle – In the event that Solais products begin to overheat, they will undetectably dim themselves to protect your technology investments.

WARNING: Not for use in fully enclosed luminaires. Risk of electric shock. Use in an indoor, dry location only. This device is not intended for use with emergency exit fixtures or emergency exit lights. May not be compatible with all dimmers; please visit solais.com/dimming for up-to-date dimmer compatibility information.

NOTES: This device complies with Part 15 of the FCC Rule. This product may cause interference with other devices. If interference occurs, change the locations of the products involved. **Compatible on 120v systems.**



X-CHANGEABLE

X-Changeable is our all-in-one technology that incorporates the optics, LEDs, driver and power within a replaceable module. This allows you to change the lumen output, color temperature, beam angle and trim color with ease.