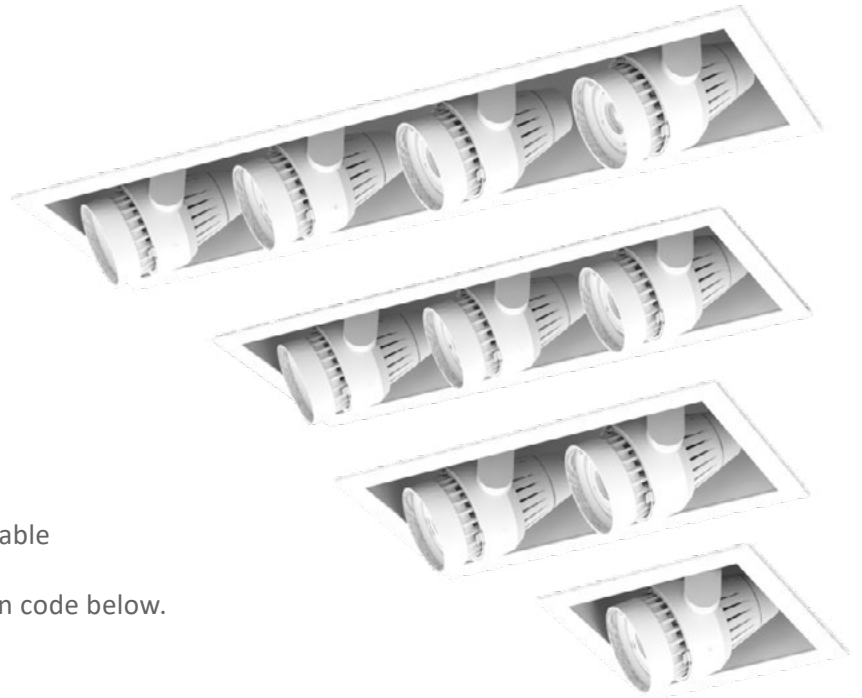


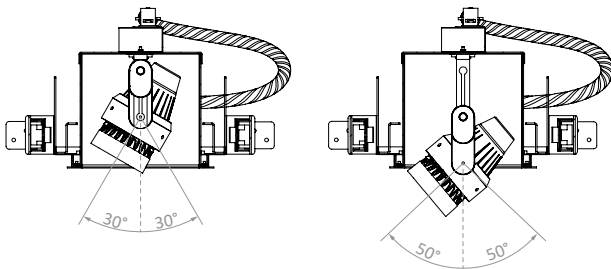
- 120 - 277 V standard
- 0-10, TRIAC and ELV dimming
- Emergency backup available*
- Passively cooled fixtures
- 2 self-locking aiming height positions
- 0-50° vertical tilt; 360° rotation
- Modular individually specifiable optics
- 50,000 hours (L70)
- Integrated driver
- RoHs-compliant
- Dry location rating
- Certified to UL standards
- Rated for IC and non-IC use
- Designed for new construction ceilings only
- *MonoWhite color rendering enhancements available
- *90+ High CRI available.
To order, replace 'K' in CCT designation with 'h' in code below.



▪ Aiming

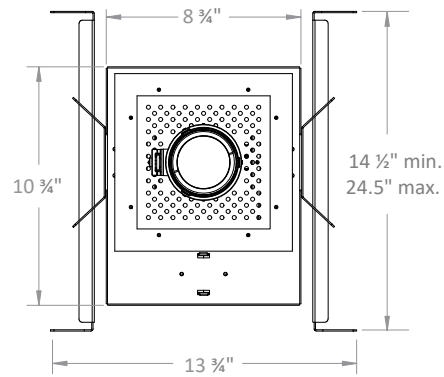
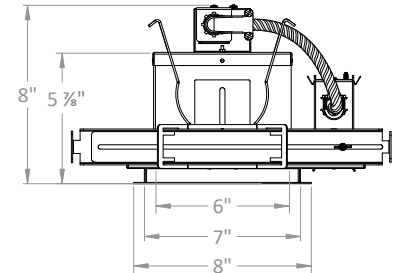
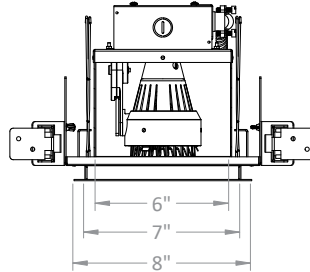
Position 1

Position 2



*Consult factory for lead time and availability

- Modular Fixture Weight (without modules): 7.5 lb
- Ceiling Cut-Out: 7 3/8" x 7 3/8"



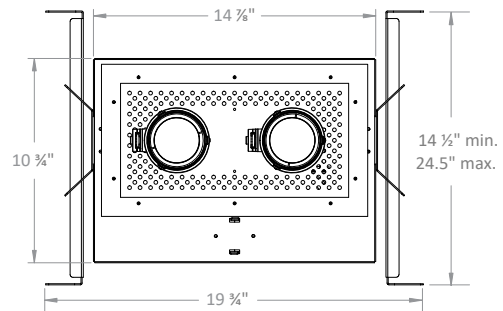
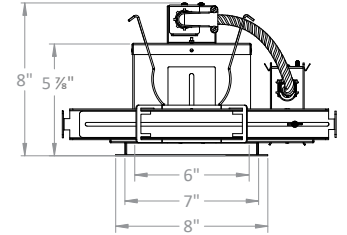
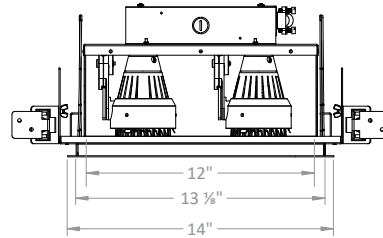
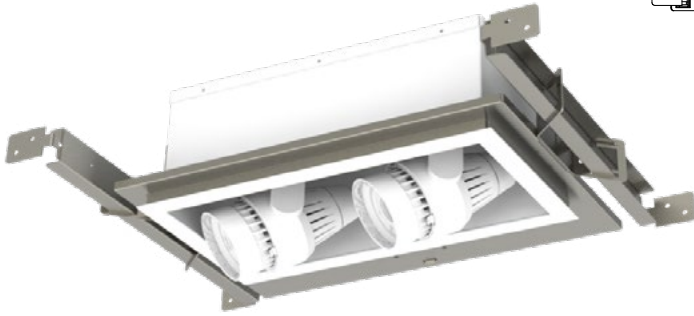
Ordering Information

Example: YAR11/Ym24/25/30K/2200/WH/WH/SL

Fixture	Module	Beam Spread	CCT	Lumens	Options + Accessories
YAR11	Ym24	COB-optic	25K*	1400	Module Options TS - Tapered Snoot HL - Honeycomb Louver SL - Linear Spread SP - Prismatic Spread More Accessories Available Fixture Options EM - Emergency Backup Microinverter*
		15c	27K	1700	
		25c	30K	2200	
		40c	30m*		
		60c	35K*		
			35m*		
			40K*		
Finish					
Die-cast, Powder Coated					
WH / WH - White Module, Interior + Flange					
BK / BK - Black Module, Interior + Flange					
BK / WH* - Black Module + Interior, White Flange					
PW / PW* - Perfect White Module, Interior + Flange					
BK / PW* - Black Module + Interior, Perfect White Flange					

*Consult factory for lead time and availability

- Modular Fixture Weight (without modules): 11.25 lb
- Ceiling Cut-Out: 7 3/8" x 13 3/8"

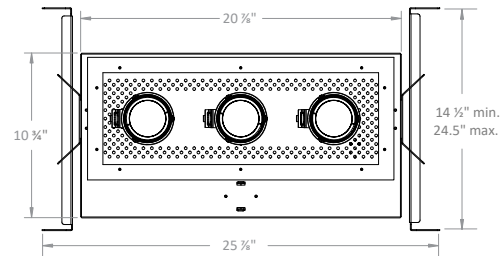
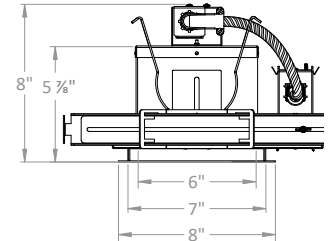
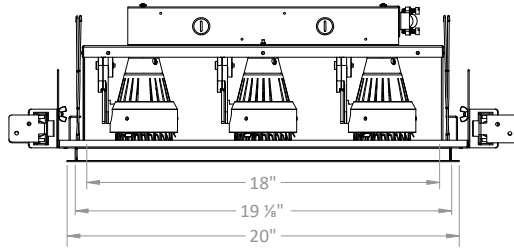


Ordering Information Example: YAR12/Xm24/25-25/30K/2400/WH/WH/SL-SL

		1 - 2				1 - 2
Fixture YAR12	Module Ym24	Beam Spread	CCT	Lumens	Options + Accessories	
		COB-optic	25K*	1400	Module Options	
		15c	27K	1700	TS - Tapered Snoot	
		25c	30K	2200	HL - Honeycomb Louver	
		40c	30m*		SL - Linear Spread	
		60c	35K*		SP - Prismatic Spread	
			35m*		More Accessories Available	
			40K*		Fixture Options	
					EM - Emergency Backup	
					Microinverter*	
					Finish	
					Die-cast, Powder Coated	
					WH / WH - White Module, Interior + Flange	
					BK / BK - Black Module, Interior + Flange	
					BK / WH* - Black Module + Interior, White Flange	
					PW / PW* - Perfect White Module, Interior + Flange	
					BK / PW* - Black Module + Interior, Perfect White Flange	

*Consult factory for lead time and availability

- Modular Fixture Weight (without modules): 13 lb
- Ceiling Cut-Out: 7 7/8" x 19 3/8"



Ordering Information

Example: YAR13/Xm24/25-25-25/30K/2400/WH/WH/SL-SL-SL

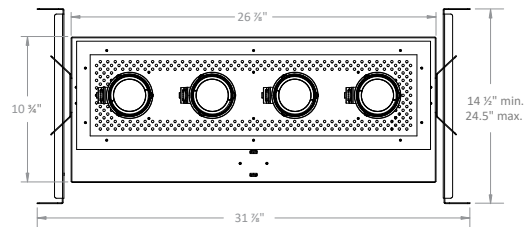
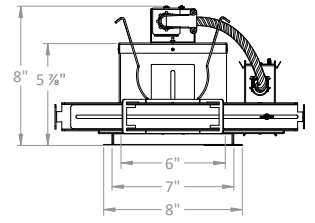
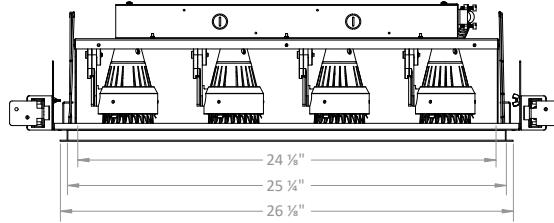
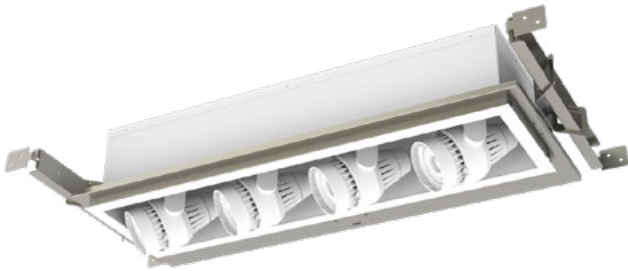
		1 - 2 - 3						1 - 2 - 3		
Fixture	Module	Beam Spread			CCT	Lumens	Options + Accessories			
YAR13	Ym24	COB-optic			25K*	1400	Module Options			
		15c			27K	1700	TS - Tapered Snoot			
		25c			30K	2200	HL - Honeycomb Louver			
		40c			30m*		SL - Linear Spread			
		60c			35K*		SP - Prismatic Spread			
					35m*		More Accessories Available			
					40K*		Fixture Options			
							EM - Emergency Backup			
							Microinverter*			

Finish

- Die-cast, Powder Coated
- WH / WH - White Module, Interior + Flange
- BK / BK - Black Module, Interior + Flange
- BK / WH* - Black Module + Interior, White Flange
- PW / PW* - Perfect White Module, Interior + Flange
- BK / PW* - Black Module + Interior, Perfect White Flange

*Consult factory for lead time and availability

- Modular Fixture Weight (without modules): 15.5 lb
- Ceiling Cut-Out: 7 5/8" x 25 1/2"



Ordering Information Example: YAR14/Xm24/25-25-25-25/30K/2400/WH/WH/SL-SL-SL



Fixture YAR14	Module Ym24	Beam Spread COB-optic 15c 25c 40c 60c	CCT 25K* 27K 30K 30m* 35K* 35m* 40K*	Lumens 1400 1700 2200
-------------------------	-----------------------	---	--	---------------------------------------

- Options + Accessories**
- Module Options
 - TS - Tapered Shoot
 - HL - Honeycomb Louver
 - SL - Linear Spread
 - SP - Prismatic Spread
 - More Accessories Available
 - Fixture Options
 - EM - Emergency Backup
 - Microinverter*

- Finish**
- Die-cast, Powder Coated
 - WH / WH - White Module, Interior + Flange
 - BK / BK - Black Module, Interior + Flange
 - BK / WH* - Black Module + Interior, White Flange
 - PW / PW* - Perfect White Module, Interior + Flange
 - BK / PW* - Black Module + Interior, Perfect White Flange

*Consult factory for lead time and availability

PHOTOMETRIC DETAILS | baseline X output multiplier X cri-cct multiplier = final output

Ym24 COB OPTIC: Baseline data for 25 W, 2200 lumens, 80+ CRI, 3000K

Ym24/15c/30K/2200

Input Power: 26.3 W
 Lumens: 1906 lm
 Efficacy: 72.6 lm/W
 Beam Angle: 18.6°
 Field Angle: 47.9°

∠	0°	45°	90°
0°	8373	8373	8373
5°	6746	6815	6805
10°	3908	3891	3745
15°	2018	1992	1859
20°	1223	1201	1119
25°	834	812	742
30°	588	568	507
35°	411	397	342
40°	286	277	229
45°	195	190	153

Ym24/25c/30K/2200

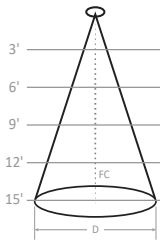
Input Power: 25.4 W
 Lumens: 2382 lm
 Efficacy: 93.8 lm/W
 Beam Angle: 23.5°
 Field Angle: 60.7°

∠	0°	45°	90°
0°	7024	7024	7024
5°	6234	6172	6059
10°	4289	4284	4155
15°	2490	2574	2487
20°	1484	1565	1552
25°	996	1039	1051
30°	713	744	762
35°	516	541	562
40°	378	399	418
45°	279	295	312

Ym24/40c/30K/2200

Input Power: 25.4 W
 Lumens: 2146 lm
 Efficacy: 84.5 lm/W
 Beam Angle: 38.7°
 Field Angle: 86.6°

∠	0°	45°	90°
0°	3223	3223	3223
5°	3082	3084	3072
10°	2677	2673	2654
15°	2131	2122	2099
20°	1574	1568	1554
25°	1109	1111	1104
30°	771	780	780
35°	543	555	561
40°	393	404	412
45°	290	299	307



Height	Ym24/15c/30K/2200	Ym24/25c/30K/2200	Ym24/40c/30K/2200
3'	0.56' D; 651 FC	1.25' D; 546 FC	2.10' D; 251 FC
6'	1.11' D; 163 FC	2.50' D; 137 FC	4.21' D; 63 FC
9'	1.67' D; 72 FC	3.74' D; 61 FC	6.31' D; 28 FC
12'	2.23' D; 41 FC	4.99' D; 34 FC	8.42' D; 16 FC
15'	2.78' D; 26 FC	6.24' D; 22 FC	10.52' D; 10 FC

CRI-CCT MULTIPLIER

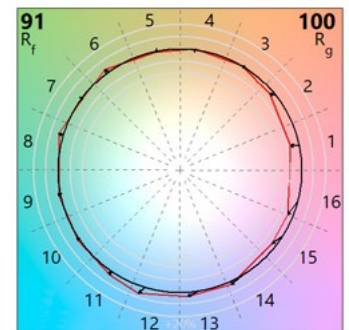
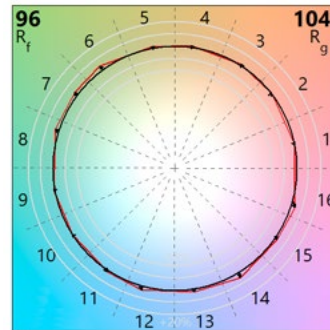
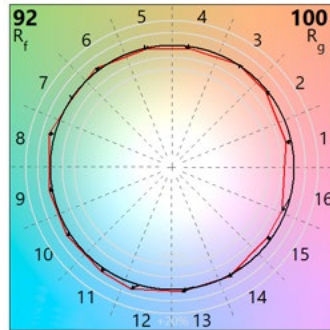
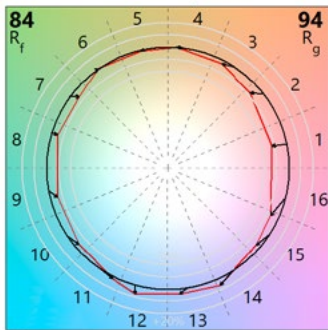
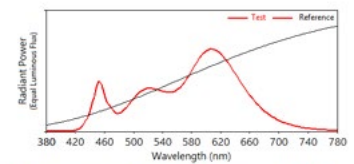
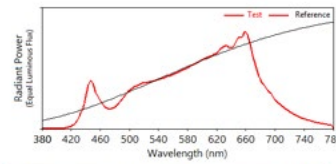
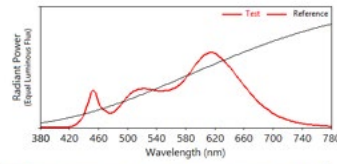
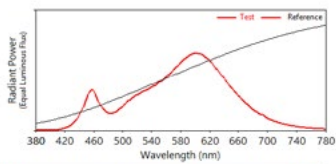
CRI	CCT	Multiplier	CRI	CCT	Multiplier
8 (80+)	2200K	0.86	H (97+)	2700K	0.66
	2500K	0.91		3000K	0.71
	2700K	0.96		3500K	0.75
	3000K	1.00		4000K	0.77
	3500K	1.03	M (MonoWhite)	3000K	0.86
	4000K	1.05		3500K	0.88
9 (90+)	2200K	0.70			
	2500K	0.77			
	2700K	0.83			
	3000K	0.86			
	3500K	0.89			
	4000K	0.91			

OUTPUT MULTIPLIER

Package	Optic	Multiplier
18 W 1700 lm Y24 COB	15°	0.86
	25°	0.74
	40°	0.74
14 W 1400 lm Y24 COB	15°	0.70
	25°	0.60
	40°	0.60

TM30 COLOR REPORTS

- 3000K with 80+ CRI
 - $R_f = 84$; $R_g = 94$
 - $R_A = 82$; $R_g = 11$
- 3000K with 90+ CRI
 - $R_f = 92$; $R_g = 100$
 - $R_A = 93$; $R_g = 56$
- 3000K with 97+ CRI
 - $R_f = 96$; $R_g = 104$
 - $R_A = 97$; $R_g = 98$
- 3000K with MonoWhite
 - $R_f = 91$; $R_g = 100$
 - $R_A = 91$; $R_g = 42$



Luxiance utilizes active cooling to remove heat from the LED system - allowing Solais LED lamps to operate cooler, resulting in superior life, light output, and performance.



Thermal Throttle – In the event that Solais products begin to overheat, they will undetectably dim themselves to protect your technology investments.

WARNING: Not for use in fully enclosed luminaires. Risk of electric shock. Use in an indoor, dry location only. This device is not intended for use with emergency exit fixtures or emergency exit lights. May not be compatible with all dimmers; please visit solais.com/dimming for up-to-date dimmer compatibility information.

NOTES: This device complies with Part 15 of the FCC Rule. This product may cause interference with other devices. If interference occurs, change the locations of the products involved. **Compatible on 120v systems.**



X-Changeable is our all-in-one technology that incorporates the optics, LEDs, driver and power within a replaceable module. This allows you to change the lumen output, color temperature, beam angle and trim color with ease.