

PROJECT

TYPE

SPECIFIER

MEMO

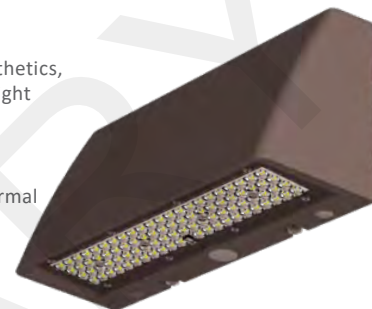
ORDERING CODE BREAKDOWN

TWPM

MEDIUM TRAPEZOID WALL PACK  
ARCHITECTURAL LED FIXTURE

## MAIN FEATURES

- Trapezoidal in shape to provide clean aesthetics, industry-leading performance, a recessed light engine for high angle cutoff, precise optical uniformity, and visually comfortable optics.
- A die-cast, aluminum alloy housing with super durable polyester powder coating for optimal thermal performance, weather resistance, gloss/color retention, and exceptional corrosion resistance
- 2,000 lumens at 10W to 12,000 lumens at 100W
- Delivering up to 160 lm/W at 4000K and 90 CRI
- Integral photocells, motions sensors, EM battery backup options
- Surface Mount Conduit Box option for retrofit applications



FIXTURE	LUMENS	OPTIC	CRI	CCT	FINISH	FIXTURE OPTIONS	FIELD OPTIONS
TWPM	2 : 2,000 lm; 10W	PT2 : Precision TIR Type II (6,000+ lm)	9 : 90 CRI	30 : 3000K	SBZ : Bronze (RAL8019)	EM : Emergency Battery Backup	SMCB : Surface Mount Conduit Box
	3 : 3,000 lm; 20W	PT3 : Precision TIR Type III (6,000+ lm)		40 : 4000K	SBK : Black (RAL9017)	HL : EM Heater Light	
	4 : 4,000 lm; 30W	PFT : Precision TIR Type IV Forward Throw (6,000+ lm)		50 : 5000K	SWH : White (RAL9003)	PB : Buttoneye Photocell	
	6 : 6,000 lm; 45W	VCD : Visually Comfortable Diffused (2,000-6,000 lm)			*MBZ : Marine Bronze	MS : PIR Motion Sensor Bi-level Dimming	
	7 : 7,500 lm; 55W				*MBK : Marine Black	1PS : Parallel 10kV/5kA Surge Protection	
	8 : 8,500 lm; 65W				*MWH : Marine White		
	10 : 10,000 lm; 80W						
	12 : 12,000 lm; 100W						

Notes: \*Consult factory for lead time and availability

Additional CRIs and/or CCTs available upon request

MS : PIR Motion Sensor bi-level dimming at 100%/35%; intended for 8-15' mounting heights on switched circuits with external dusk to dawn switching

**ELECTRICAL**

- Isolated MVOLT (120V-277V) standard
- Emergency Battery Backup option available:
  - 40°C Cold Pack up to 8,500 lumens;
  - 20°C Cold Pack 10,000+ lumens

**CONSTRUCTION + FINISH**

- One-piece diecast aluminum alloy housing void of exterior features provides a trapezoidal architectural aesthetic while optimizing heat management for long life
- Polyester super-durable powder coating for superior gloss maintenance, color retention, and weather resistance
- Standard finishes meets salt-spray to 5,000 hours per ASTM B117

**OPTICS + PERFORMANCE**

- 90CRI standard for improved safety through higher visual acuity and color rendering
- Up to 160 lumens per watt (at 4000K 90CRI)
- 2,000 to 12,000 lumen packages (10-100W)
- 4 customized distributions:
  - Visually Comfortable Diffused (VCD)
  - Precision Type II (PT2)
  - Precision Type III (PT3)
  - Precision Type IV Forward Throw (PFT)

**CONTROLS**

- Dim-to-off 0-10V dimming standard
- Integral photocells and motions sensor options
- Button-eye photocell

**MOUNTING**

- Single-piece design allows for simple and efficient wall mounting
- Surface mount conduit box (SMBC) option available for retrofit applications

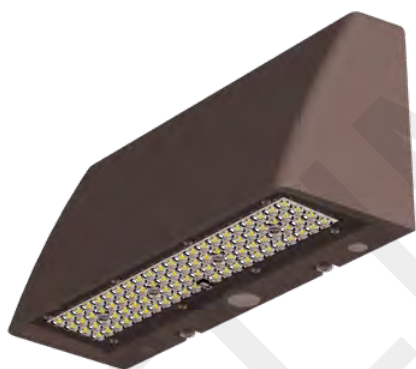
**LISTINGS**

- IP66-rated LED optical chamber
- cETLus Listed for wet locations
- DLC Premium listed

**WARRANTY**

- 5-year warranty

## DIMENSIONAL DETAILS



▪ Side view

▪ Side view with Surface Mount Conduit Box (SMBC)

