

PROJECT

TYPE

SPECIFIER

MEMO

ORDERING CODE BREAKDOWN

TWPM Wildlife

MEDIUM TRAPEZOID WALL PACK
ARCHITECTURAL LED FIXTURE

MAIN FEATURES

- A down illumination trapezoidal wall pack to provide clean aesthetics, industry-leading performance, a recessed light engine for high angle cutoff, precise optical uniformity, and visually comfortable optics.
- Meets DLC direct emission - Amber wildlife product requirements with zero radiation below 560nm
- Delivering 1000 lumens at 25W
- A die-cast, aluminum alloy housing with super durable polyester powder coating for optimal thermal performance, weather resistance, gloss/color retention, and exceptional corrosion resistance
- Integral photocells, motions sensors, EM battery backup, and wireless options
- Surface Mount Conduit Box option for retrofit applications



FIXTURE	LUMENS	OPTIC	LED	POWER SUPPLY	FINISH	FIXTURE OPTIONS	FIELD OPTIONS
TWPM	1 : 1,000 lm; 25W	PT2 : Precision TIR Type II PT3 : Precision TIR Type III PFT : Precision TIR Type IV Forward Throw VCD : Visually Comfortable Diffused	AMB : de-Amber Wildlife and Turtle Safe <i>DarkSky Approved</i>	UNV : 120-277V 347 : 347V	SBZ : Bronze (RAL8019) SBK : Black (RAL9017) SWH* : White (RAL9003)	EM1 : 10W, -20°C Emergency Battery Backup EM2 : 20W, -40°C Emergency Battery Backup PB1 ^{1,2} : Button-eye Photocell for UNV (120-277V) PB2 ^{1,2} : Button-eye Photocell for 347V power supply MS ² : PIR Motion Sensor Bi-level Dimming 1PS : Parallel 10kV/5kA Surge Protection 2PF : Dual Power Feed 2DR : Dual Drivers CAS : Casambi Wireless Node CC* : Coastal Construction	SMCB : Surface Mount Conduit Box HAS : High Angle Shield (black finish only)

Notes: *Extended lead times may apply. Consult factory for more information.

⁴PB1 for use with UNV (120-277V power supply); PB2 for use with 347 (347V power supply)⁶MS is not compatible with PB1 or PB2 button-eye photocells

TWPM Wildlife

MEDIUM TRAPEZOID WALL PACK
ARCHITECTURAL LED FIXTURE

ELECTRICAL

- Isolated MVOLT (120V-347V) standard;
- Emergency Battery Backup option available:
 - EM1: 10W -20°C Cold Pack
 - EM2: 20W -40°C Cold Pack

OPTICS + PERFORMANCE

- 1,000 lumen packages (25W)
- 4 customized distributions:
 - Visually Comfortable Diffused (VCD)
 - Precision Type II (PT2)
 - Precision Type III (PT3)
 - Precision Type IV Forward Throw (PFT)

MOUNTING

- Single-piece design allows for simple and efficient wall mounting
- Surface mount conduit box (SMCB) option available for retrofit applications - equipped with leveling bubble for easy installation

CONSTRUCTION + FINISH

- One-piece die cast aluminum alloy housing void of exterior features provides a trapezoidal architectural aesthetic while optimizing heat management for long life
- Stainless steel 316 hardware to hold up in extreme weather
- Polyester super-durable powder coating for superior gloss maintenance, color retention, and weather resistance
- Standard finishes meets salt-spray to 5,000 hours per ASTM B117
- Standard finishes (*consult factory for custom*):
 - Bronze (SBZ): RAL 8019
 - Black (SBK): RAL 9017
 - White (SWH): RAL 9003

CONTROLS

- Dim-to-off 0-10V dimming standard
- Button-eye photocell (PB1 and PB2)
- PIR Motion Sensor (MS) - bi-level dimming at 100%/35%; for 8-20' mounting heights on switched circuits with external dusk to dawn switching
- Casambi wireless node

LISTINGS

- Title 20 compliant
- DarkSky Approved Commercial Luminaires
- cETLus Listed in wet locations for down illumination (5001838)
- Meets DLC direct emission - Amber wildlife product requirements with zero radiation below 560nm

WARRANTY

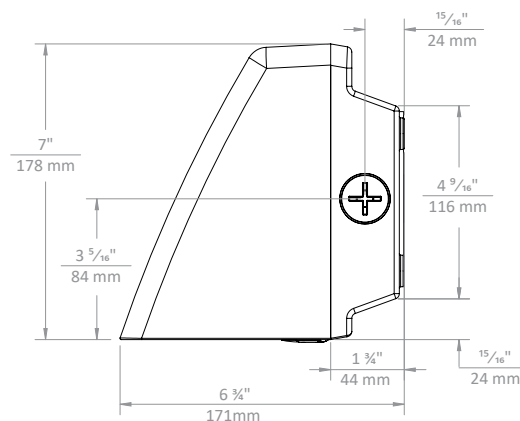
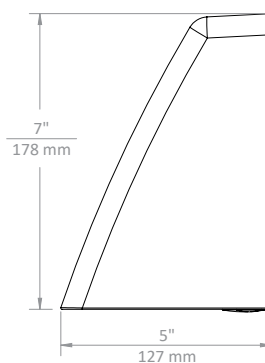
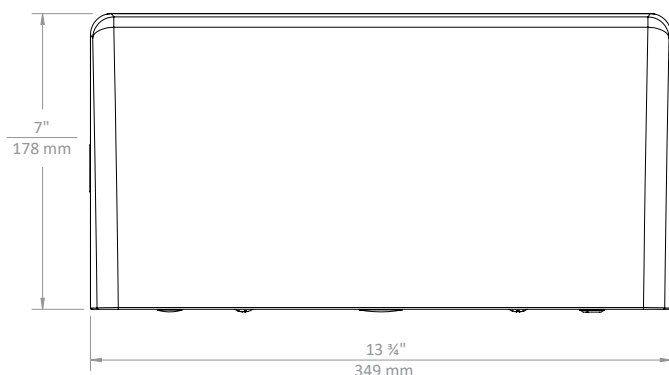
- 5-year warranty

DIMENSIONAL DETAILS



▪ Side view

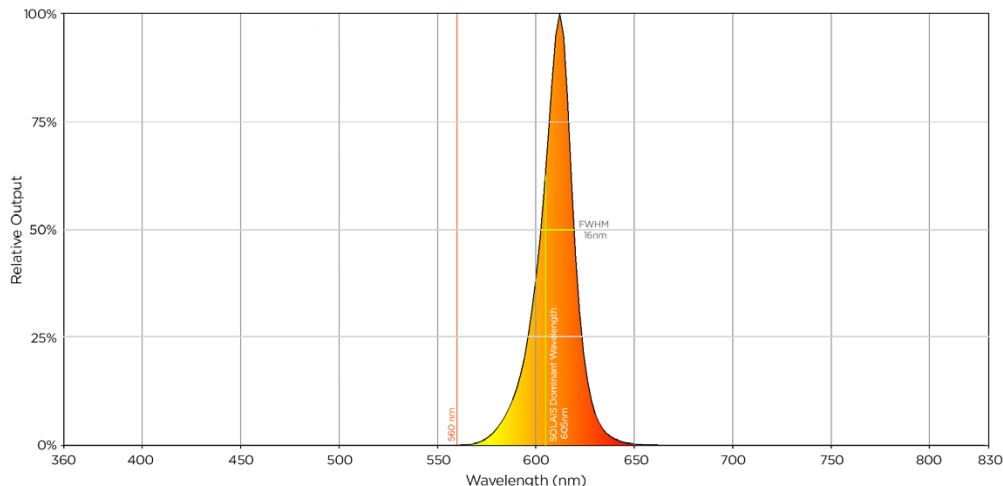
▪ Side view with Surface Mount Conduit Box (SMCB)



TWPM Wildlife

MEDIUM TRAPEZOID WALL PACK
ARCHITECTURAL LED FIXTURE

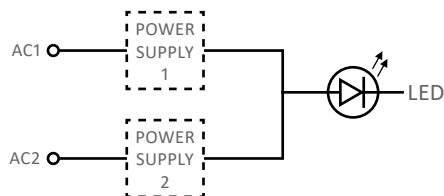
- Zero radiation/illumination below 560nm
- Dominant wavelength at 605nm; between 590-610nm as required
- Full Width at Half Maximum (FWHM) at 16nm; ≤ 20 nm as required



FIXTURE OPTION DETAILS

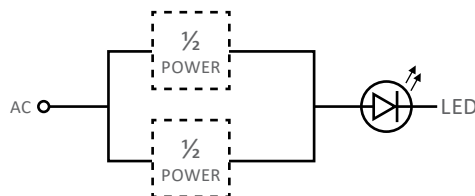
2PF : Dual Power Feed

Provides two separate drivers which can be wired independently with two sets of leads exiting the fixture



2DR : Dual Drivers

Provides two separate drivers at half power each, with a single set of leads exiting the fixture

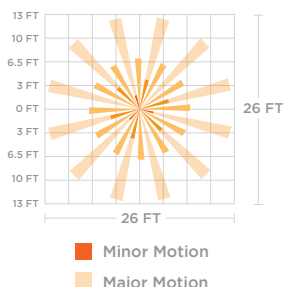


MS : PIR Motion Sensor with Bi-level Dimming

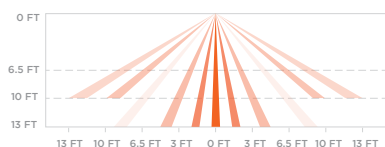
bi-level dimming at 100%/35%; for 8-20' mounting heights on switched circuits with external dusk to dawn switching



COVERAGE TOP VIEW



COVERAGE SIDE VIEW



OCCUPANCY SENSING

