

ST3Arm DW

REMODEL | NEW CONSTRUCTION
STRETTA ARM 3" DOWNLIGHT WALLWASH

MAIN FEATURES

- Down Wall Wash provides even top-to-bottom illumination
- Designed for remodel installation; new construction tray and Chicago plenum/airtight housing optional
- 95 CRI Standard; 98+ CRI option available
- Delivering up to 2000 lumens at 3000K, 95 CRI and 24W
- 360° rotation for optimal adjustability
- Solais' proprietary driver technology delivers smooth, flicker-free dimming (per IEEE 1789-2015) to 1% via phase-cut or 0-10V
- Custom TIR optic platform to ensure smooth beams and excellent light control with no need for a solite lens
- Modular platform with easy maintenance for individual components



Round and square with beveled flange shown above.

FIXTURE	COLLAR	TRIM	TRIM FINISH	BEAM SPREAD	CRI	CCT	LUMENS	POWER SUPPLY	INSTALLATION	FIXTURE OPTIONS
ST3ARM	R1 : Round; 0.5"- 0.75"	DWM : Microflange Trim	PW : Perfect White	DW : Downlight Wallwash	9 : 95 CRI	22 ² : 2200K	1000 ¹ : 16W (Dim-to-Warm only)	UNV : 120-277V Universal	NCT : New Construction Tray	CASPC : Casambi Wireless Phase-cut Node
	R2 : Round; 0.75"-1.38"	DWT : Flangeless Trim	BK : Black		H : 98+ CRI	25 ² : 2500K	1200 : 12W	UN1 : 120-277V 0.1% Logarithmic 0-10V	NCC ³ : New Construction Tray with Commercial Hanging Brackets with field-installed vertical adjustment	CAS10 : Casambi Wireless 0-10V Node
	S1 : Square; 0.5"-0.75"		BR : Bronze		D ¹ : Dim-to-Warm	27 : 2700K	1600 : 18W	UDA : 120-277V 0.1% Logarithmic DALI-2 D4i	NCH : New Construction CP Housing RM : Remodel Floating J-box	CAS : Casambi Wireless DALI-2 Node
	S2 : Square; 0.75"-1.38"		SV : Silver			30 : 3000K	2000 : 24W	DMX : 100-277V DMX 2Channel		AWNRR : Lutron Athena Wireless DALI-2 Node
						35 : 3500K				LEV : Leviton Intellect DALI-2 Node
						40 : 4000K				WAT : Wattstopper/ Encelium Wireless DALI-2 Node
						50 : 5000K				EM : 10W Integrated Emergency Battery Backup

Notes: ¹Dim to Warm is 1000 lumens, 16W, 98+ CRI, 3000K to 1800K;

²2200K, 2500K unavailable with 'H' - 98+ CRI

³NCC - Vertical Adjustment Brackets are field installed.

*Collar color will be matched to trim finish selection. Consult factory for alternative selection.

ST3Arm DW

REMODEL | NEW CONSTRUCTION
STRETTA ARM 3" DOWNLIGHT WALLWASH

OPTICS + PERFORMANCE

- Down Wall Wash provides even top-to-bottom illumination
- 4 performance packages
 - 16W; 1000 lumens (*dim-to-warm only*)
 - 12W; 1200 lumens
 - 18W; 1600 lumens
 - 24W; 2000 lumens
- Color Temperatures
 - 95 and 98+ CRI: 2200K, 2500K, 2700K, 3000K, 3500K, 4000K, 5000K
 - Dim to Warm: 3000K to 1800K
- Fixture life:
 - Full power: 50,000 hours
 - 75% power: 100,000 hours
 - Below 50% power: 125,000 hours
 - LED 90% lumen maintenance: 60,000 hours

TRIM + COLLAR OFFERINGS

- Shapes: Round or Square
- Ceilings: gypsum, wood, t-bar, specialty, other
- Ceiling Thicknesses: $\frac{1}{2}$ " - $\frac{3}{4}$ ", $\frac{3}{4}$ " - $1\frac{1}{8}$ "
- Standard trim colors (*consult factory for custom*):
 - White: RAL 9003
 - Black: RAL 9005
 - Bronze: RAL 8017
- $\frac{1}{4}$ " microflange or flangeless/trimless

CONSTRUCTION + FINISH

- Weight 2.4 lbs. (*remodel*)
- Die-cast aluminum alloy housing for optimal thermal performance

WARRANTY

- 5-year warranty

POWER + CONTROLS

- Universal Input: 120-277V
- Proprietary Solais drivers
 - UNV: Phase-cut or 0-10V <1% dimming
 - UDA: Logarithmic 0.1% DALI-2/D4i dimming
 - UN1: Logarithmic 0.1% 0-10V dimming
 - DMX: DMX 2Channel controls
- Casambi and Lutron wireless controls available

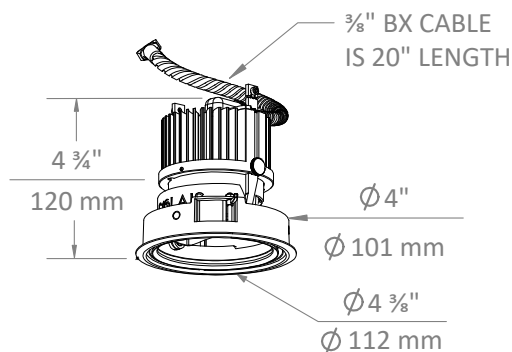
RATINGS + CERTIFICATIONS

- IC rated for remodel installations ≤ 1000 lumens without tray or housing; else IC rated with NCH only
- UL and cUL listed in U.S.A. and Canada for wet locations when utilizing lensed or wall wash trim; else damp and dry listed
- Title 24 and JA8 compliant
- Conforms to Washington State Energy Code
- Contain no lead or mercury
- Spray foam rated with housing option (NCH only)
- Chicago Plenum rated and Airtight per ASTM E283 with housing option (NCH only)

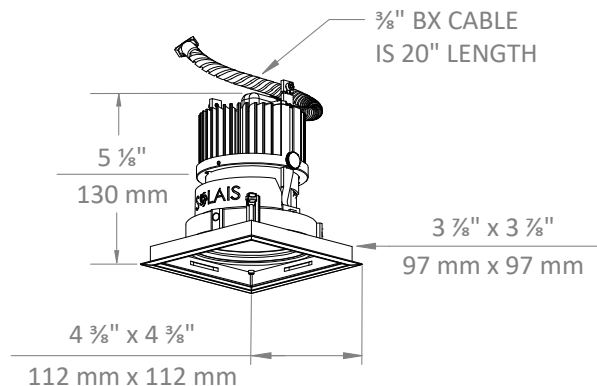
DIMENSIONAL DETAILS

REMODEL

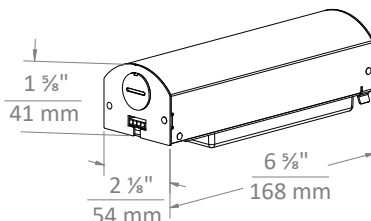
- Round Ceiling Cutout: $\varnothing 4\frac{1}{8}$ "



- Square Ceiling Cutout: $4\frac{1}{8}$ " x $4\frac{1}{8}$ "



FLOATING J-BOX



ST3Arm DW

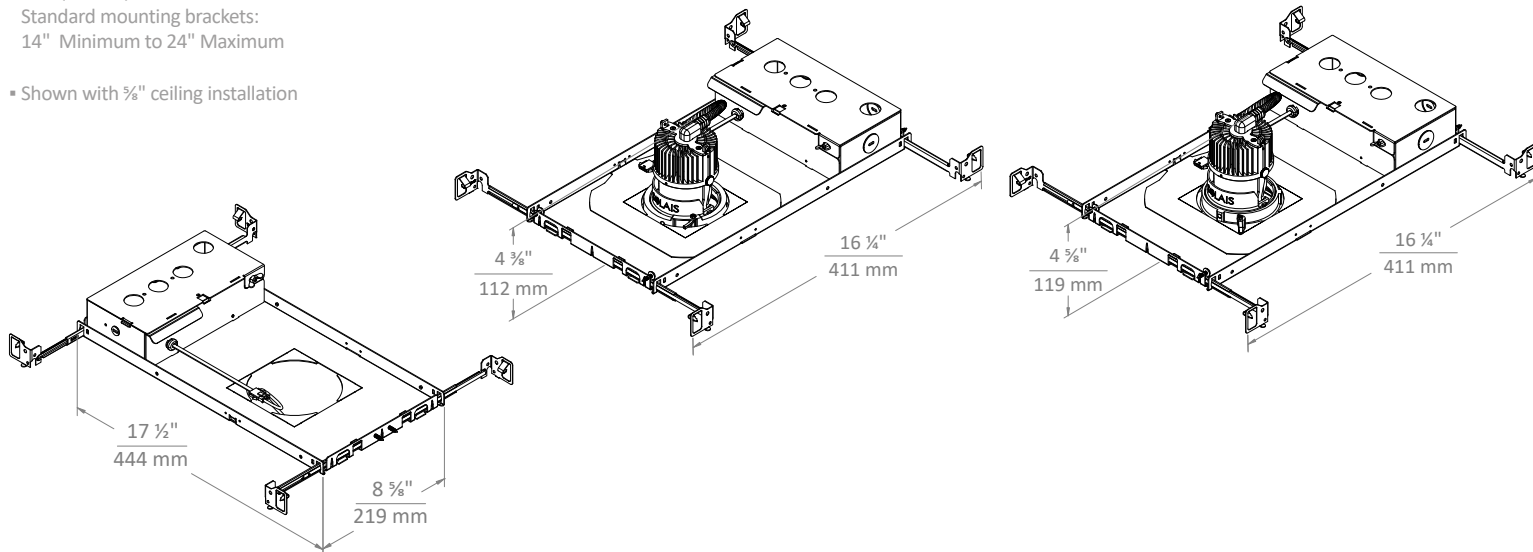
REMODEL | NEW CONSTRUCTION
STRETTA ARM 3" DOWNLIGHT WALLWASH

NEW CONSTRUCTION TRAY

- NCT (5.7 lbs.)
Standard mounting brackets:
14" Minimum to 24" Maximum
- Shown with $\frac{3}{8}$ " ceiling installation

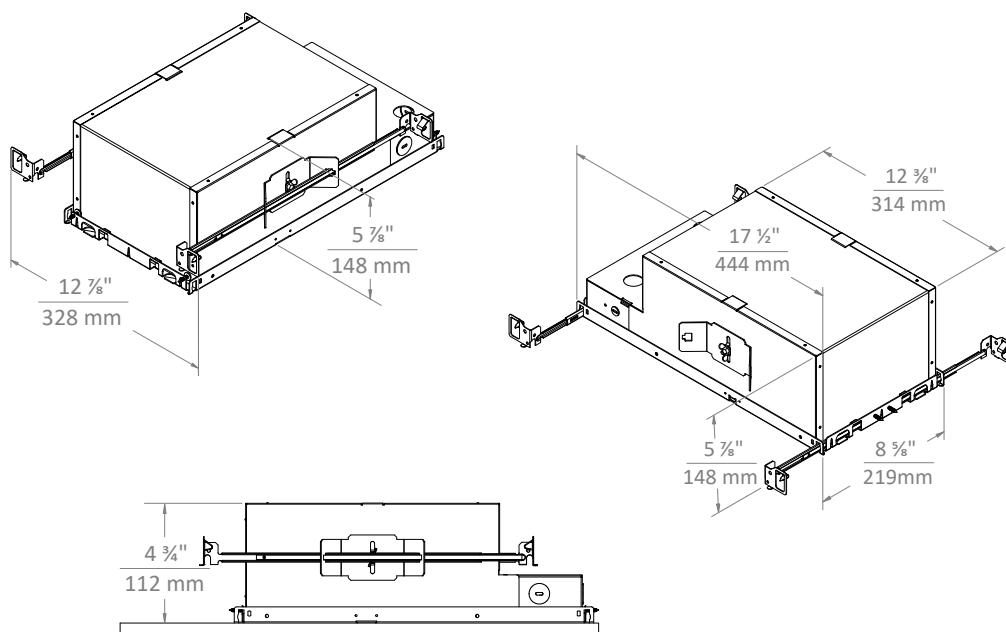
ROUND INSTALLATION

SQUARE INSTALLATION



CHICAGO PLENUM HOUSING

- Chicago plenum, spray foam rated, low airflow housing
- NCH (7.2 lbs.)
Commercial mounting brackets:
10" Minimum to 24" Maximum
with 2 3/4" vertical adjustment
- Shown with $\frac{3}{8}$ " ceiling installation



PROJECT

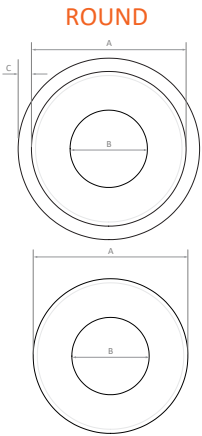
TYPE

ST3Arm DW

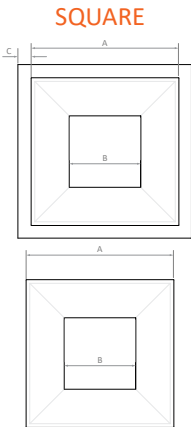
REMODEL | NEW CONSTRUCTION
STRETTA ARM 3" DOWNLIGHT WALLWASH

TRIM + COLLAR DETAIL

A: Outer insatallation dimension (to include collar)
B: Aperture dimension
C: Flange dimension



	ROUND		SQUARE	
	BDM		BAM	
MICROFLANGE		A: 3 7⁄8" 97mm B: 2" 51mm C: 1⁄4" 6mm		A: 3 7⁄8" 97mm B: 2" 51mm C: 1⁄4" 6mm
FLANGELESS	BDT		BAT	
		A: 3 7⁄8" 97mm B: 2" 51mm C: n/a		A: 3 7⁄8" 97mm B: 2" 51mm C: n/a



FINISH DETAILS

	PERFECT WHITE (PW)	BLACK (BK)		BRONZE (BZ)	
	IN WHITE CEILING	IN WHITE CEILING	IN BLACK CEILING	IN MILLWORK	IN MILLWORK
MICROFLANGE (DWM)					
FLANGELESS (DWT)					