

## Slimline

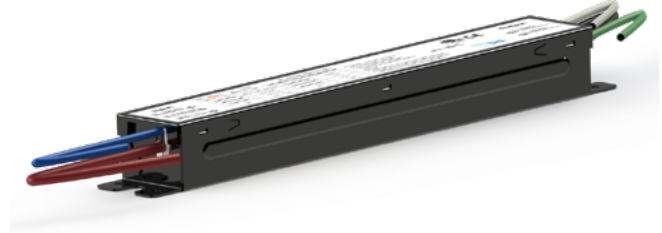
### POWER SUPPLY | SDMV2480PS

PROJECT \_\_\_\_\_

TYPE \_\_\_\_\_

SPECIFICATION \_\_\_\_\_

- Designed for use with the following products:
  - CS Surface Mount Linears
  - CST5 and CST8 Bi-pin Linears
  - RDC and RDE Reach-in Door Luminaires
- Input Voltage: 120/277V (typical);  $108 \geq 305V$
- Output Voltage: 24 (typical);  $23 \geq 25.2$
- Input Frequency: 50/60Hz (typical);  $57 \geq 63Hz$
- Output Power: 80W
- Power Factor:  $<0.96 @ 120V$ ;  $<0.92 @ 277V$
- Efficiency (Full Load):  $<84% @ 120V$ ;  $<86% @ 277V$
- Leakage Current: 0.75 mA max. @ 254Vac/50Hz
- Rated for operation  $-20^{\circ}C$  to  $60^{\circ}C$  and 10 - 85% relative humidity
- Rated for storage  $-40^{\circ}C$  to  $85^{\circ}C$  and 5 - 95% relative humidity
- Life (MTBF\*): 50,000 hrs @  $25^{\circ}C$ , Full load & nominal input,  $T_c < 85^{\circ}C$
- Weight: 14.4 oz.
- EN55015 Class B Compliant
- RoHS Compliant EN61347-2-13 UL8750 CLASS2 Safety Regulation Compliant
- IP66
- 0-10 V Dimming



\*MTBF: Mean Time Between Failures

- Input: 3-pin wire
  - 18AWG, Black, 270mm, 10.75"
  - 18AWG, White, 270mm, 10.75"
  - 18AWG, Y/G, 280mm, 10.5"
- Output: 2-pin wire
  - 18AWG, Red, 570mm, 22.75"
  - 18AWG, Black, 570mm, 22.75"
- Dimming:
  - 22AWG, Purple, 360mm, 22.75"
  - 22AWG, Grey, 360mm, 22.75"



Wiring Diagram

\* Note: Input ground wire (18AWG, Y/G, 280mm) must be connected to the ground

