

PROJECT _____ TYPE _____

SPECIFIER _____ MEMO _____

ORDERING CODE BREAKDOWN

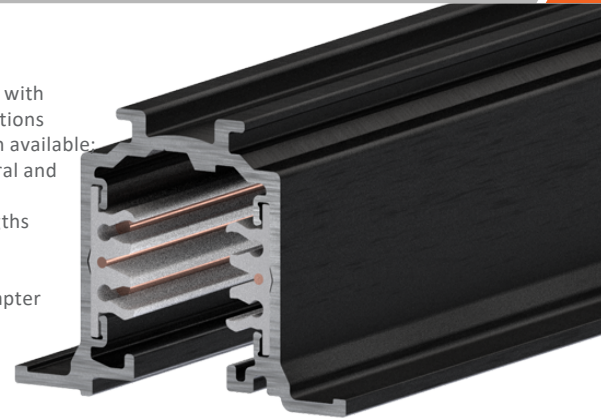
GAIA⁺ GPRF

RECESSED FLANGED

120/277V | 2C/2N + 3C/1N TRACK

MAIN FEATURES

- Designed for recessed with flange mounted applications
- Concealed adapter option available: Great for use in architectural and high-end applications
- Field-cuttable for custom lengths
- 0-10V dimming down to 1% with GP and GPC-type adapters
- Phase cut dimming with G-type adapter



Ordering Information

Track	Voltage	Circuits	Shape	Length	Finish
GP	1 - 120V	3 - 3-circuit/1-neutral 2 - 2-circuit/2-neutral	RF	4 - 4 ft. Track 8 - 8 ft. Track	PW - White BK - Black
	2 - 277V	2 - 2-circuit/2-neutral			

ELECTRICAL + SAFETY

- 120V, 16A
- 1900W maximum load
- Up to 55 lb. load per 3 ft. section with 2 mounting points
- Up to 22 lb. load per 8 ft. section with 2 mounting points

RATINGS + CERTIFICATIONS

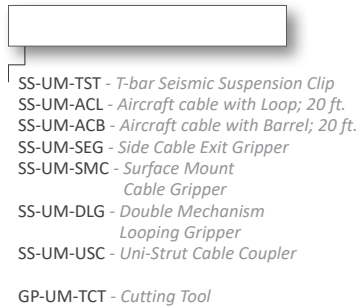
- UL Certified for dry locations
- RoHS-compliant
- Designed for use with Solais[®] G-, GP- and GPC-type fixtures and components

WARRANTY

- 1-year warranty

CONSTRUCTION + FINISH

- Extruded thermoplastic insulated
- 12 AWG solid copper conductors
- Insulated extruded body in PVC

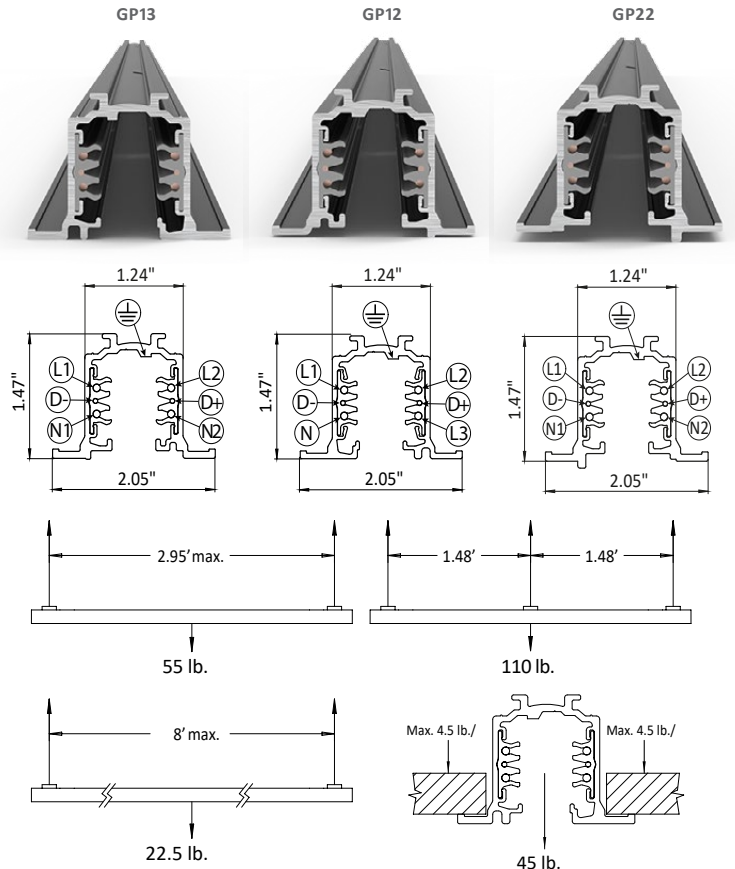


Accessories + Components

- GP-UM-TCV - Track Cover
- GP-RF-ECC - End Cap
- GP-RF-ERC - Recessed End Cover
- GP-RF-SRC - Recessed Straight Cover
- GP-RF-LRC - Recessed "L" Cover
- GP-RF-TRC - Recessed "T" Cover
- GP-RF-XRC - Recessed "X" Cover

- GPxx-UM-SJC - Straight Joining Connector
- GPxx-UM-SIC - Straight Insulating Connector (Mechanical)
- GPxx-UM-ACR - Adjustable Corner
- GPxx-UM-EFR - End Feed (Right Polarity)
- GPxx-UM-EFL - End Feed (Left Polarity)
- GPxx-UM-SFC - Straight Feedable Connector
- GPxx-UM-LFI - 'L' Feed (Inner Polarity)
- GPxx-UM-LFO - 'L' Feed (Outer Polarity)
- GPxx-UM-TOL - 'T' Feed (Outer + Left Polarity)
- GPxx-UM-TOR - 'T' Feed (Outer + Right Polarity)
- GPxx-UM-TIL - 'T' Feed (Inner + Left Polarity)
- GPxx-UM-TIR - 'T' Feed (Inner + Right Polarity)
- GPxx-UM-XFC - 'X' Feed Connector

GP-UM-TCC - Track Ceiling Clamp






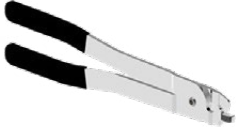
PROJECT	TYPE
---------	------

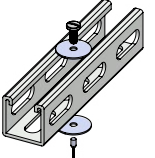
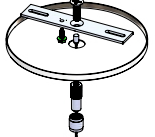
Gaia+ Components		
GP-UM-TCV Track Cover PVC body; Length: 1000 mm		
GP-RF-ECC End Cap Polycarbonate body with locking screw		
GP-RF-ERC Recessed End Cover Polycarbonate body with locking screw (Recommended for GP13-UM-EFR/EFL)		
GP-RF-SRC Recessed Straight End Cover Polycarbonate body with locking screws (Recommended for GP13-UM-SFC)		
GP-RF-LRC Recessed "L" Cover Polycarbonate body with locking screws (Recommended for GP13-UM-LFI/LFO)		
GP-RF-TRC Recessed "T" Cover Polycarbonate body with locking screws (Recommended for GP13-UM-TOL/TOR/TIL/TIR)		
GP-RF-XRC Recessed "X" Cover Polycarbonate body with locking screws (Recommended for GP13-UM-XFC)		

Gaia+ Connectors		
GPxx-UM-EFR End Feed (Right Polarity) Polycarbonate body, copper alloy contacts		
GPxx-UM-EFL End Feed (Left Polarity) Polycarbonate body, copper alloy contacts		
GPxx-UM-SFC Straight Feedable Connector Polycarbonate body, copper alloy contacts		
GPxx-UM-LFI 'L' Feed (Inner Polarity) Polycarbonate body, copper alloy contacts		
GPxx-UM-LFO 'L' Feed (Outer Polarity) Polycarbonate body, copper alloy contacts		
GPxx-UM-TOL 'T' Feed (Outer + Left Polarity) Polycarbonate body, copper alloy contacts		
GPxx-UM-TOR 'T' Feed (Outer + Right Polarity) Polycarbonate body, copper alloy contacts		
GPxx-UM-TIL 'T' Feed (Inner + Left Polarity) Polycarbonate body, copper alloy contacts		
GPxx-UM-TIR 'T' Feed (Inner + Right Polarity) Polycarbonate body, copper alloy contacts		
GPxx-UM-XFC 'X' Feed Connector Polycarbonate body, copper alloy contacts		

Gaia+ Connectors		
GPxx-UM-SJC Straight Joining Connector Polycarbonate body, copper alloy contacts		
GPxx-UM-SIC Straight Insulating Connector (Mechanical) Polycarbonate body		
GPxx-UM-ACR Adjustable Corner Polycarbonate body, copper alloy contacts		

PROJECT	TYPE
---------	------

Track Suspension Accessories		
GP-UM-TCC	Track Ceiling Clamp Bracket in painted steel	
SS-UM-ACL	Aircraft Cable with Loop 20 feet of galvanized cable. Recommended for use with SS-UM-SEG.	
SS-UM-ACB	Aircraft Cable with Barrel 20 feet of galvanized cable. Recommended for use with SS-UM-SEG.	
SS-UM-SEG	Side Cable Exit Gripper Recommended for use with SS-UM-ACL or SS-UM-ACB.	
SS-UM-SMC	Surface Mount Cable Coupler 2-part non-adjustable cable coupler Recommended for use with SS-UM-ACB.	
SS-UM-DLG	Double Mechanism Looping Gripper Double-ended gripper with double side cable exit. Recommended for use with SS-UM-ACB or SS-UM-ACL.	
GP-UM-TCT	Cutting Tool for track conductors; Steel	

Track Suspension Accessories		
SS-UM-USC	Uni-Strut Cable Coupler 4-part non-adjustable cable coupler Recommended for use with SS-UM-ACB	
SS-UM-ACK	Air-Craft Cable Canopy Kit J-box Mount 5" diameter canopy, 20ft aircraft cable	
SS-UM-MCK	Single-Circuit Cable Canopy Kit Feed J-box Mount 5" diameter canopy, 20ft aircraft cable, 5-wire power feed	