

MAIN FEATURES

- Designed for recessed with flange mounted applications
- Concealed adapter option available; Great for use in architectural and high-end applications
- Field-cuttable for custom lengths
- 0-10V dimming down to 1% with GPx and GPxc-type adapters
- Phase cut dimming with Gx-type adapter

ELECTRICAL + SAFETY

- 120V, 16A
- 1900W maximum load
- Up to 55 lb. load per 3 ft. section with 2 mounting points
- Up to 22 lb. load per 8 ft. section with 2 mounting points

CONSTRUCTION + FINISH

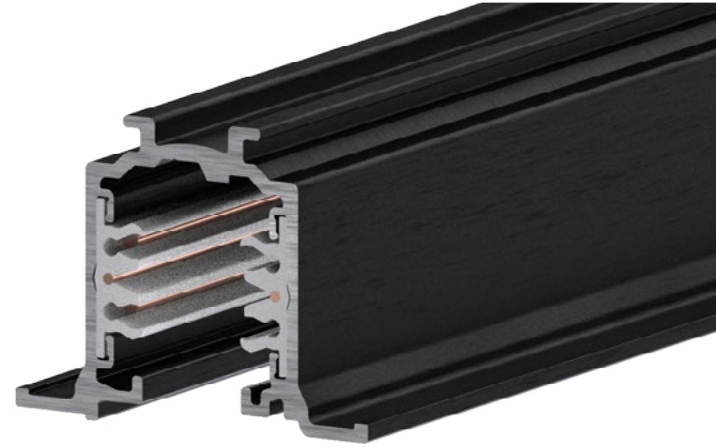
- Extruded thermoplastic insulated
- 12 AWG solid copper conductors
- Insulated extruded body in PVC

RATINGS + CERTIFICATIONS

- UL Certified for dry locations
- RoHS-compliant
- Designed for use with Solais® Gx, GPx and GPxc-type fixtures and components

WARRANTY

- 1-year warranty



Ordering Information

Track GP	Voltage 1 - 120V	Circuits 3 - 3-circuit/ 1-neutral	Shape RF	Length 4 - 4 ft. Track 8 - 8 ft. Track 12 - *12 ft. Track (drop-ship only)	Finish PW - White BK - Black
--------------------	----------------------------	--	--------------------	---	---

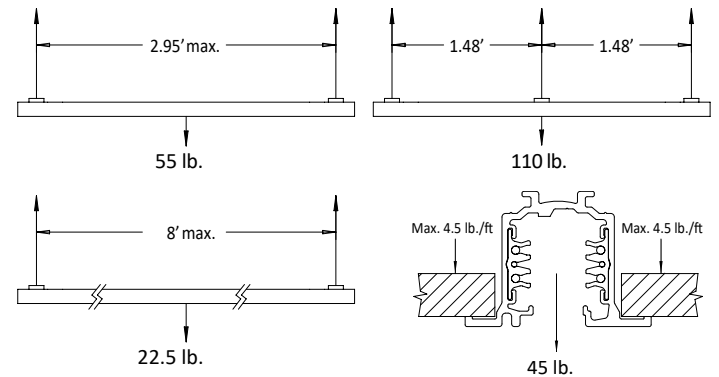
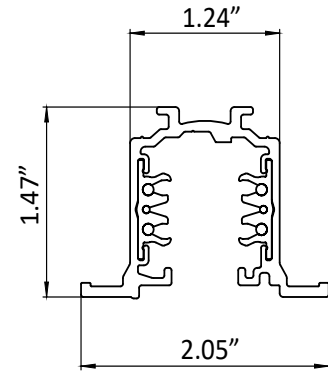
Finish PW - White BK - Black

- SS-UM-TST - T-bar Seismic Suspension Clip
- SS-UM-ACL - Aircraft cable with Loop; 20 ft.
- SS-UM-ACB - Aircraft cable with Barrel; 20 ft.
- SS-UM-SEG - Side Cable Exit Gripper
- SS-UM-SMC - Surface Mount Cable Gripper
- SS-UM-DLG - Double Mechanism Looping Gripper
- GP-UM-TCT - Cutting Tool

Accessories + Components

- GP-UM-TCV - Track Cover
- GP-RF-ECC - End Cap
- GP-RF-ERC - Recessed End Cover
- GP-RF-SRC - Recessed Straight Cover
- GP-RF-LRC - Recessed "L" Cover
- GP-RF-TRC - Recessed "T" Cover
- GP-RF-XRC - Recessed "X" Cover
- GPXX-UM-SJC - Straight Joining Connector
- GPXX-UM-SIC - Straight Insulating Connector (Mechanical)
- GP13-UM-ACR - Adjustable Corner
- GP13-UM-EFR - End Feed (Right Polarity)
- GP13-UM-EFL - End Feed (Left Polarity)
- GP13-UM-SFC - Straight Feedable Connector
- GP13-UM-LFI - 'L' Feed (Inner Polarity)
- GP13-UM-LFO - 'L' Feed (Outer Polarity)
- GP13-UM-TOL - 'T' Feed (Outer + Left Polarity)
- GP13-UM-TOR - 'T' Feed (Outer+ Right Polarity)
- GP13-UM-TIL - 'T' Feed (Inner + Left Polarity)
- GP13-UM-TIR - 'T' Feed (Inner + Right Polarity)
- GP13-UM-XFC - 'X' Feed Connector

GP-UM-TCC - Track Ceiling Clamp

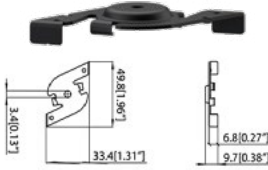







Gaia+ Components		
GP-UM-TCV Track Cover PVC body; Length: 1000 mm		
GP-RF-ECC End Cap Polycarbonate body with locking screw		
GP-RF-ERC Recessed End Cover Polycarbonate body with locking screw		
GP-RF-SRC Recessed Straight End Cover Polycarbonate body with locking screws		
GP-RF-LRC Recessed "L" Cover Polycarbonate body with locking screws		
GP-RF-TRC Recessed "T" Cover Polycarbonate body with locking screws		
GP-RF-XRC Recessed "X" Cover Polycarbonate body with locking screws		

Gaia+ Connectors		
GP13-UM-EFR End Feed (Right Polarity) Polycarbonate body, copper alloy contacts		
GP13-UM-EFL End Feed (Left Polarity) Polycarbonate body, copper alloy contacts		
GP13-UM-SFC Straight Feedable Connector Polycarbonate body, copper alloy contacts		
GP13-UM-LFI 'L' Feed (Inner Polarity) Polycarbonate body, copper alloy contacts		
GP13-UM-LFO 'L' Feed (Outer Polarity) Polycarbonate body, copper alloy contacts		
GP13-UM-TOL 'T' Feed (Outer + Left Polarity) Polycarbonate body, copper alloy contacts		
GP13-UM-TOR 'T' Feed (Outer + Right Polarity) Polycarbonate body, copper alloy contacts		
GP13-UM-TIL 'T' Feed (Inner + Left Polarity) Polycarbonate body, copper alloy contacts		
GP13-UM-TIR 'T' Feed (Inner + Right Polarity) Polycarbonate body, copper alloy contacts		
GP13-UM-XFC 'X' Feed Connector Polycarbonate body, copper alloy contacts		

Gaia+ Connectors		
GPXX-UM-SJC Straight Joining Connector Polycarbonate body, copper alloy contacts		
GPXX-UM-SIC Straight Insulating Connector (Mechanical) Polycarbonate body		
GP13-UM-ACR Adjustable Corner Polycarbonate body, copper alloy contacts		



Track Suspension Accessories		
GP-UM-TCC	Track Ceiling Clamp <i>Bracket in painted steel</i>	
SS-UM-ACL	Aircraft Cable with Loop <i>20 feet of galvanized cable. Recommended for use with SS-UM-SEG.</i>	
SS-UM-ACB	Aircraft Cable with Barrel <i>20 feet of galvanized cable. Recommended for use with SS-UM-SEG.</i>	
SS-UM-SEG	Side Cable Exit Gripper <i>Recommended for use with SS-UM-ACL or SS-UM-ACB.</i>	
SS-UM-SMC	Surface Mount Cable Coupler <i>2-part non-adjustable cable coupler. Recommended for use with SS-UM-ACB.</i>	
SS-UM-DLG	Double Mechanism Looping Gripper <i>Double-ended gripper with double side cable exit. Recommended for use with SS-UM-ACB or SS-UM-ACL.</i>	
GP-UM-TCT	Cutting Tool <i>for track conductors; Steel</i>	