

PROJECT _____

TYPE _____

MEMO _____

ORDERING CODE BREAKDOWN

MAIN FEATURES

- A die-cast, aluminum alloy housing with Polyester super durable powder coating for optimal thermal performance, weather resistance, gloss/color retention, and corrosion resistance
- 42,000 to 55,000 lumen packages (315-442W)
- Delivering up to 139 lm/W
- Integral photocells, motions sensors, and Casambi wireless bluetooth integration
- 2 mounting options available; All mounting options allow for multiple fixture installations at 90°
- 3G Vibration rated (ANSI C136.31) for knuckle mount;
- 1.5G Vibration rated for trunnion mount
- 120-277V with dim-to-off 0-10V dimming standard
- Multiple field-installed shielding options available



Knuckle Mount
EPA: 0.52 sq. ft.
WEIGHT: 32.43 lbs.



FIXTURE	LUMENS	BEAM SPREAD	CRI	CCT	VOLTAGE	CONTROLS	SURGE	PHOTOCELL RECEPTACLE	FINISH	MOUNTING	FIXTURE OPTIONS	FIELD OPTIONS
BL4C	42H : 42,000 lm; 300W	N66 : NEMA 6x6	7 : 70 CRI	30 : 3000K	STD : 120-277V	10 : 0-10V	1PS : 10kV 5kA, 120-277V	00 : None	SBZ : Bronze (RAL8019)	ES : Extended Site Arm	ZT1 : 0-10V Z Ambient Light Control	SOL28 HSS : House-side Shield
	44H : 44,000 lm; 330W	N75 : NEMA 7x5	8 : 80 CRI	40 : 4000K	HVL* : 277-480V	DA : DALI-2	2PS : *20kV 10kA, 120-277V	70 : 7-pin	SGY : Grey (RAL7038)	HT : Horizontal Tenon	ZT3 : 0-10V Z IR + Ambient Light Control	SOL28 FSS : Front-side Shield
	45H : 45,000 lm; 340W			50 : 5000K			2PH : *20kV 10kA, 277-480V	OZ : Z Receptacle	SBK : Black (RAL9017)	KM : 3" OD Knuckle Mount	ZT4 : 0-10V Z Occupancy + IR + Ambient Light Control	SOL28 CSS : Cul-de-Sac Shield
	47H : 47,000 lm; 360W							7Z : 7-pin + Z	SWH : White (RAL9003)		ZT5 : 0-10V Z Casambi Bluetooth Mesh Node	SOL28 SS : Scoop Shield
	50H : 50,000 lm; 390W								MBZ* : Marine Bronze (RAL8019)			PCL-01 : 120-277V Photocell
	52H : 52,000 lm; 410W								MGY* : Marine Grey (RAL7038)			PCL-02 : 120-277V Photocell
	56H : 56,000 lm; 440W								MBK* : Marine Black (RAL9017)			PCL-03 : 347-480V Photocell
									MWH* : Marine White (RAL9003)			PCL-04 : 347-480V Photocell (Midnight Dim)
												PCL-05 : 120-277V Photocell (Midnight Dim)
												ENL-SC1 : Shorting Cap

Notes: * Special offering, consult factory for lead time and availability.
 *Consult factory for Marine Grade lead time and availability.
 Consult factory to verify BAA/BABA compliant products.
 80 or 90 CRI, and additional CCTs available upon request
 Shields are flat-black, injection molded plastic resin, tool-less, clip-on discrete shield.
 ZT1 - ZT5 options only available with 10 : 0-10V Dimming

PROJECT	TYPE
---------	------

CONSTRUCTION

- Die-cast, aluminum alloy housing for optimal thermal performance and exceptional corrosion resistance

LISTINGS

- IP66 rated optical and electrical chambers
- 3G Vibration rated (ANSI C136.31) for knuckle mount; 1.5G Vibration rated for trunnion mount
- UL listed for wet locations (E487976)

OPTICS + PERFORMANCE

- Up to 143 lumens per watt
- 42,000- to 56,000-lumen packages (301-442W)
- 2 customized distributions available
 - NEMA 7x5
 - NEMA 6x6
- Multiple shielding options available

ELECTRICAL

- 120-277V Standard; 277-480V option available
- PF>0.90, THD < 20%
- Parallel surge protection: enhanced 10kV standard, extreme 20kV optional (ANSI C136.2-2015)
- For series surge protection, consult factory
- Rated for operation -40°C to 40°C
- For 50°C option, consult factory

CONTROLS

- 0-10V dimming standard; DALI-2 option available
- Receptacle options:
 - ANSI C136.41 7-pin (for DALI-2 or 0-10V dimming)
 - Zhaga Book 18 (for next generation ambient light/motion sensing)
 - Casambi Bluetooth Low Energy technology

FINISH

- TGIC polyester super durable powder coating with superior gloss, color retention, and weather resistance
- Standard finishes provided at 3 mil nominal thickness with salt-spray tested to 3,000 hours as per ASTM B117
- For marine grade finish, consult factory. Provided at 5 mil nominal thickness with salt-spray tested to 4,000 hours as per ASTM B117

MOUNTING

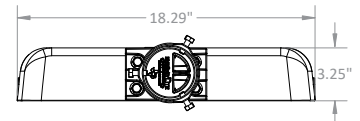
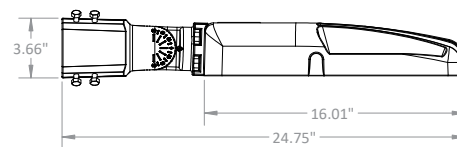
- Knuckle mount is a 3" O.D. offering 7.5° tilt increments
- Trunion mount offers 15° tilt increments
- All mounting options allow for multiple fixture installations at 90°

WARRANTY

- 5 year warranty

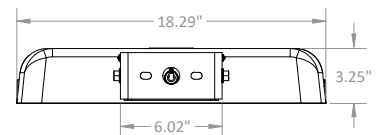
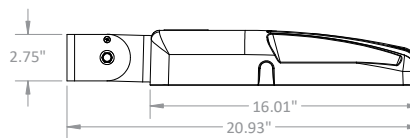
Knuckle

EPA	Weight
0.52 sq. ft.	32.43 lbs.



Trunnion

EPA	Weight
0.42 sq. ft.	33.36 lbs.



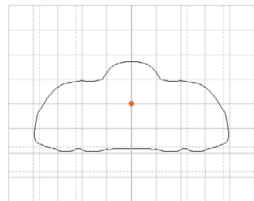
POLE CONFIGURATION EPAs

• Data below includes luminaire and integrated mounting option. Additional tenons, arms and brackets are not included.

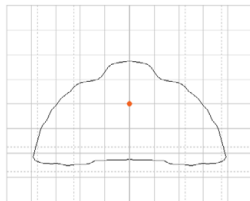
Mounting Type	Tilt	Single	2 at 90°	2 at 180°	3 at 90°	3 at 120°	2 Side-by-Side
Knuckle Mount (7.5° increments)	90° (horizontal)	0.52 sq. ft.	1.02 sq. ft.	1.04 sq. ft.	1.54 sq. ft.	1.54 sq. ft.	1.01 sq. ft.
	60°	0.52 sq. ft.	1.76 sq. ft.	1.04 sq. ft.	2.28 sq. ft.	2.28 sq. ft.	2.48 sq. ft.
	45°	0.52 sq. ft.	2.14 sq. ft.	1.04 sq. ft.	2.66 sq. ft.	2.66 sq. ft.	3.24 sq. ft.
	30°	0.52 sq. ft.	2.43 sq. ft.	1.04 sq. ft.	2.95 sq. ft.	2.95 sq. ft.	3.82 sq. ft.
	0° (vertical)	0.52 sq. ft.	2.66 sq. ft.	1.04 sq. ft.	3.18 sq. ft.	3.18 sq. ft.	4.27 sq. ft.
Trunion Mount (15° increments)	90° (horizontal)	0.42 sq. ft.	0.83 sq. ft.	0.85 sq. ft.	1.26 sq. ft.	1.26 sq. ft.	0.82 sq. ft.
	60°	0.42 sq. ft.	1.56 sq. ft.	0.85 sq. ft.	1.98 sq. ft.	1.98 sq. ft.	2.26 sq. ft.
	45°	0.42 sq. ft.	1.92 sq. ft.	0.85 sq. ft.	2.34 sq. ft.	2.34 sq. ft.	2.99 sq. ft.
	30°	0.42 sq. ft.	2.20 sq. ft.	0.85 sq. ft.	2.62 sq. ft.	2.62 sq. ft.	3.55 sq. ft.
	0° (vertical)	0.42 sq. ft.	2.41 sq. ft.	0.85 sq. ft.	2.83 sq. ft.	2.83 sq. ft.	3.96 sq. ft.

PHOTOMETRIC DISTRIBUTION

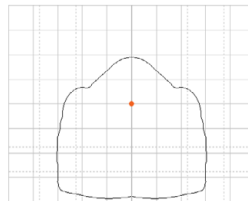
TYPE II ROADWAY MEDIUM



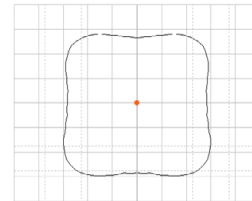
TYPE III ROADWAY MEDIUM



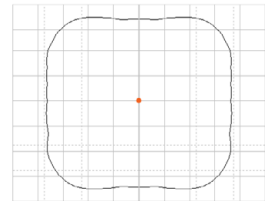
TYPE IV WIDE SHORT



TYPE V SQUARE SHORT



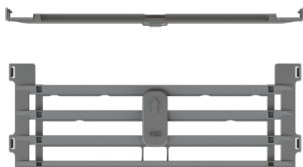
TYPE V SQUARE MEDIUM



SHIELD ACCESSORY DETAILS

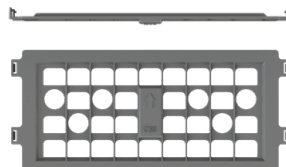
HOUSE SIDE SHIELD

- Flat-black, injection-molded plastic resin
- Tool-less, clip-on discrete shield



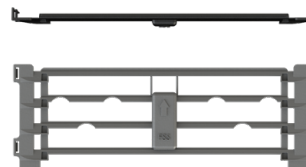
CUL-DE-SAC SHIELD

- Flat-black, injection-molded plastic resin
- Tool-less, clip-on discrete shield



FRONT SIDE SHIELD

- Flat-black, injection-molded plastic resin
- Tool-less, clip-on discrete shield



SCOOP SHIELD

- Flat-black, injection-molded plastic resin
- Tool-less, clip-on discrete shield



Performance Package	Drive Current	Color Temperature (CCT)	Input Power (Watts)	TYPE NEMA 7x5 AT 70 CRI			TYPE NEMA 6x6 AT 70 CRI		
				Lumens	Efficacy (lm/W)	Max Candela	Lumens	Efficacy (lm/W)	Max Candela
42H	427mA	5000K	301	38,489	128	29,103	43,152	143	18,479
		4000K		39,680	132	28,255	41,788	139	24,579
		3000K		40,870	136	27,408	40,424	134	17,311
44H	477mA	5000K	326	42,210	124	30,872	45,774	141	19,602
		4000K		43,516	128	29,973	44,328	136	24,579
		3000K		44,821	132	29,074	42,881	132	18,363
45H	477mA	5000K	342	42,210	124	31,917	47,323	139	20,266
		4000K		43,516	128	30,987	45,828	135	24,579
		3000K		44,821	132	30,058	44,333	131	18,985
47H	511mA	5000K	362	44,167	122	33,396	49,516	137	21,205
		4000K		45,533	126	32,424	47,952	133	24,579
		3000K		46,899	130	31,451	46,387	128	19,865
50H	544mA	5000K	391	46,649	119	35,273	52,300	134	22,397
		4000K		48,092	123	34,246	50,647	129	24,579
		3000K		49,535	127	33,219	48,995	125	20,981
52H	570mA	5000K	411	48,171	117	36,424	54,006	131	23,127
		4000K		49,661	121	35,363	52,299	127	24,579
		3000K		51,151	124	34,302	50,593	123	21,666
55H	611mA	5000K	442	51,565	117	38,991	57,811	131	24,757
		4000K		53,160	120	37,855	55,985	127	24,579
		3000K		54,755	124	36,719	54,158	123	23,192

LUMEN AMBIENT TEMPERATURE (LAT) MULTIPLIERS

Ambient Temperature		Lumen Multiplier
Celsius	Fahrenheit	
0°C	32°F	1.02
10°C	50°F	1.01
25°C	77°F	1.00
40°C	104°F	0.99
50°C	122°F	0.97

TM-21 LUMEN MAINTENANCE PROJECTION

▪ Calculated by utilizing the LED manufacturer's LM80 test data in conjunction with third-party-verified in situ LED drive current and LED temperature data. Use data below to determine light-loss factors.

Performance Package	50,000 Hrs	60,000 Hrs	100,000 Hrs
≤ 44H	99.67%	99.49%	98.77%
46H	98.95%	98.62%	97.30%
40H	96.41%	95.66%	92.72%

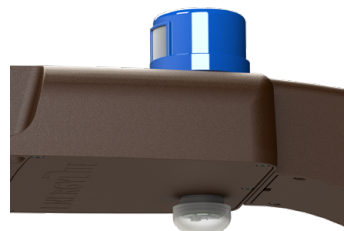
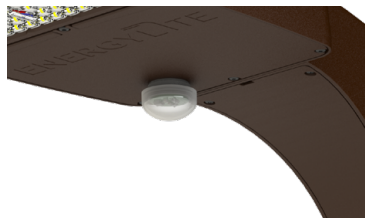
PROJECT _____

TYPE _____

CONTROL OPTIONS

0-10 V ZHAGA OPTIONS

- ZT1: Ambient Light Control
- ZT3: IR + Ambient Light Control
- ZT4: Occupancy + IR + Ambient Light Control
- ZT5: Casambi Bluetooth Low Energy + Ambient Light Control



PHOTOCELL OPTIONS

- PCL01: 120-277 V Photocell (640J, IP65); Blue
- PCL02: 120-277 V Photocell (1280J, IP66); Blue
- PCL03: 347-480 V Photocell (1280J, IP66); Yellow
- PCL04: Midnight Dimming, 347-480 V Photocell (1280J, IP65); Brown



POLE INFORMATION

• Solais Lighting Group offers a full line of aluminum and steel poles, brackets and accessories for your installation. For more information, consult factory.

SQUARE STRAIGHT

- 8- to 39-ft. height options

ROUND STRAIGHT

- 8- to 35-ft. height options

SQUARE TAPERED

- 20- to 50-ft. height options

ROUND TAPERED

- 8- to 39-ft. height options
- 45- to 70-ft. telescoping height options

HINGED TAPERED

- 20- to 39-ft. height options

