

PROJECT _____

TYPE _____

MEMO _____

ORDERING CODE BREAKDOWN

LED BROADLITE (GEN 2) FLOOD LIGHT FIXTURE

MAIN FEATURES

- Designed with a die-cast, aluminum alloy housing for optimal thermal performance and exceptional corrosion resistance
- Delivering up to 170 lumens per watt
- 3,000- to 20,000 lumen packages (20-160W)
- All mounting options allow for multiple fixtures at 90°
- TGIC polyester super durable powder coating with superior gloss, color retention, and weather resistance
- 0-10V dimming standard; DALI-2 dimming option available
- BAA/BABA Compliance available; *Consult factory to confirm specific fixture code is compliant if this is a requirement*
- **Designed and assembled in U.S.A.!**



Knuckle Mount

EPA: 0.47 sq. ft.

WEIGHT: 12.77 - 14.92 lbs.



FIXTURE	LUMENS	BEAM SPREAD	CRI	CCT	VOLTAGE	CONTROLS	SURGE	PHOTOCELL RECEPTACLE	FINISH	MOUNTING	FIXTURE OPTIONS	FIELD OPTIONS	
BL1	3H : 3,000 lm; 21W	N66 : NEMA 6x6	7 : 70 CRI	30 : 3000K	STD :	10 : 0-10V	1PS : 10kV 5kA, 120-277V	00 : None	SBZ : Bronze (RAL8019)	KM : 3" OD Knuckle Mount	ZT1 : 0-10V Z Ambient Light Control	SOL28 HSS : House-side Shield	
	4H : 4,000 lm; 25W	N75 : NEMA 7x5		40 : 4000K	HVL :		2PS : *20kV 10kA, 120-277V	70 : 7-pin	SGY : Gray (RAL7038)		TM : Trunion Mount	ZT3 : 0-10V Z IR + Ambient Light Control	SOL28 FSS : Front-side Shield
	5H : 5,000 lm; 32W			50 : 5000K			2PH : *20kV 10kA, 277-480V	0Z : Z receptacle	SWH : White (RAL9003)			ZT4 : 0-10V Z Occupancy + IR + Ambient Light Control	SOL28 CSS : Cul-de-Sac Shield
	6H : 6,000 lm; 42W						7Z : 7-pin + Z	SBK : Black (RAL9017)		ZT5 : 0-10V Z Casambi Bluetooth Mesh Node	SOL28 SS : Scoop Shield		
	7H : 7,000 lm; 52W							*MBZ : Marine Bronze			PCL-01 : 120-277V Photocell		
	8H : 8,000 lm; 60W							*MGY : Marine Grey			PCL-02 : 120-277V Photocell		
	9H : 9,000 lm; 65W							*MWH : Marine White			PCL-03 : 347-480V Photocell		
	11H : 11,000 lm; 80W							*MBK : Marine Black			PCL-04 : 347-480V Photocell (Midnight Dim)		
	12H : 12,000 lm; 89W										PCL-05 : 120-277V Photocell (Midnight Dim)		
	13H : 13,000 lm; 98W										ENL-SC1 : Shorting Cap		
	14H : 14,000 lm; 112W												
	16H : 15,000 lm; 131W												
	16P : 16,000 lm; 123W												
	18P : 18,000 lm; 143W												
	20P : 20,000 lm; 164W												

Notes: Consult factory to verify BAA/BABA compliant products. ZT1-ZT5 options only available with 10: 0-10V dimming. Additional CRIs and/or CCTs available upon request.

*Consult factory for lead time and availability.

Shields are flat-black, injection molded plastic resin, tool-less, clip-on discrete shield.

FINISH

- TGIC polyester super-durable powder coating with superior gloss, color retention and weather resistance
- Standard finishes provided at 3 mil nominal thickness, salt-spray-tested to 3,000 hours as per ASTM B117
- For marine-grade finish, consult factory. Provided at 5 mil nominal thickness, salt-spray-tested to 4,000 hours as per ASTM B117

MOUNTING

- Knuckle mount is a 3" O.D. offering 7.5° tilt increments
- Trunion mount offers 15° tilt increments
- All mounting options allow for multiple fixture installations at 90°

CONSTRUCTION

- Die-cast, aluminum alloy housing for optimal thermal performance and exceptional corrosion resistance
- 100% recycled aluminum

ELECTRICAL

- 120-277V Standard; 277-480V option available
- PF>0.9, THD<20%
- Parallel surge protection: enhanced 10kV standard, extreme 20kV optional (ANSI C136.2-2015)
- For series surge protection, consult factory
- Rated for operation -40°C to 40°C
- For 50°C option, consult factory

OPTICS + PERFORMANCE

- Up to 170 lumens per watt
- 3,000- to 20,000-lumen packages (20-160W)
- 2 customized distributions available
 - NEMA 6x6
 - NEMA 7x5
- Multiple shielding options available

CONTROLS

- 0-10V dimming standard; DALI-2 option available
- Receptacle options:
 - ANSI C136.41 3-pin
 - ANSI C136.41 7-pin (for DALI-2 or 0-10 V dimming)
 - Zhaga Book 18 (for next generation ambient light/motion sensing)

LISTINGS

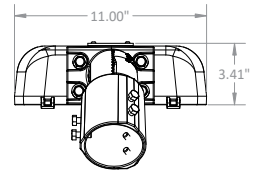
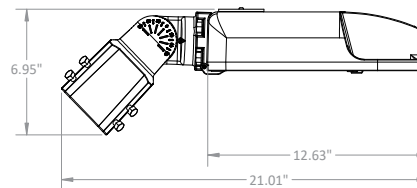
- IP66-rated optical and electrical chambers
- 3G Vibration-rated (ANSI C136.31)
- cULus Listed for wet locations
- Zhaga D4i listed
- ANSI C136.15 labeling available
- BAA/BABA Compliance available; *Consult factory to confirm specific fixture code is compliant if this is a requirement*
- **Designed and assembled in U.S.A.**

WARRANTY

- 5-year warranty

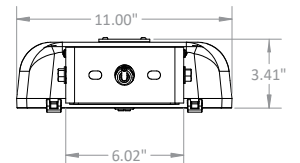
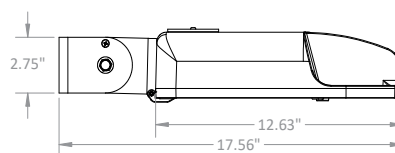
(KM) Knuckle

- Mounts to maximum 3" O.D. tenon
- Adjustable at 7.5° increments
- Not recommended to angle luminaire past 0° (vertical); maintain downward angle



(TM) Trunion

- Adjustable at 15° increments
- Not recommended to angle luminaire past 0° (vertical); maintain downward angle



LUMEN AMBIENT TEMPERATURE (LAT) MULTIPLIERS

Ambient Temperature		Lumen Multiplier
Celsius	Fahrenheit	
0°C	32°F	1.02
10°C	50°F	1.01
25°C	77°F	1.00
40°C	104°F	0.99
50°C	122°F	0.97

TM-21 LUMEN MAINTENANCE PROJECTION

Calculated by utilizing the LED manufacturer's LM80 test data in conjunction with third party verified in-situ LED drive current and LED temperature data. Use data below to determine light loss factors.

50,000 hrs	60,000 hrs	100,000 hrs
99.67%	99.49%	98.77%

WEIGHTS + EPA INFORMATION

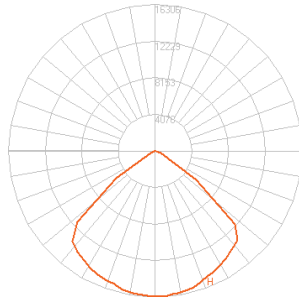
Mounting Type	Weight		
	Below 9H	11H to 15H	Above 16H
KM - Knuckle Mount	12.77 lbs.	14.46 lbs.	14.92 lbs.
TM - Trunion Mount	13.72 lbs.	15.41 lbs.	15.87 lbs.

• Data below includes luminaire and integrated mounting option. Additional tenons, arms and brackets are not included.

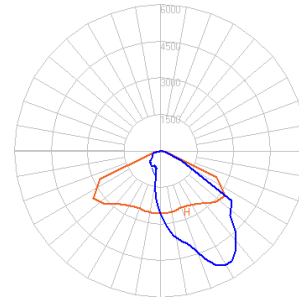
Mounting Type	Tilt						
		Single	2 at 90°	2 at 180°	3 at 90°	4 at 90°	2 Side-by-Side
Knuckle Mount (KM) <i>(7.5° increments)</i>	90° (horizontal)	0.47 sq. ft.	0.81 sq. ft.	0.94 sq. ft.	1.28 sq. ft.	1.28 sq. ft.	0.69 sq. ft.
	60°	0.47 sq. ft.	1.12 sq. ft.	0.94 sq. ft.	1.59 sq. ft.	1.59 sq. ft.	1.30 sq. ft.
	45°	0.47 sq. ft.	1.30 sq. ft.	0.94 sq. ft.	1.77 sq. ft.	1.77 sq. ft.	1.67 sq. ft.
	30°	0.47 sq. ft.	1.43 sq. ft.	0.94 sq. ft.	1.90 sq. ft.	1.90 sq. ft.	1.92 sq. ft.
	0° (vertical)	0.47 sq. ft.	1.53 sq. ft.	0.94 sq. ft.	2.00 sq. ft.	2.00 sq. ft.	2.12 sq. ft.
Trunion Mount (TM) <i>(15° increments)</i>	90° (horizontal)	0.37 sq. ft.	0.62 sq. ft.	0.74 sq. ft.	0.99 sq. ft.	0.99 sq. ft.	0.50 sq. ft.
	60°	0.37 sq. ft.	0.90 sq. ft.	0.74 sq. ft.	1.27 sq. ft.	1.27 sq. ft.	1.07 sq. ft.
	45°	0.37 sq. ft.	1.08 sq. ft.	0.74 sq. ft.	1.45 sq. ft.	1.45 sq. ft.	1.42 sq. ft.
	30°	0.37 sq. ft.	1.20 sq. ft.	0.74 sq. ft.	1.57 sq. ft.	1.57 sq. ft.	1.65 sq. ft.
	0° (vertical)	0.37 sq. ft.	1.28 sq. ft.	0.74 sq. ft.	1.65 sq. ft.	1.65 sq. ft.	1.83 sq. ft.

PHOTOMETRIC DISTRIBUTION

NEMA 6x6 (N66)



NEMA 7x5 (N75)



SHIELD ACCESSORY DETAILS

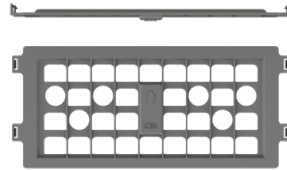
HOUSE SIDE SHIELD (HSS)

- Flat-black, injection molded plastic resin
- Tool-less, clip-on discrete shield
- Blocks light behind the fixture



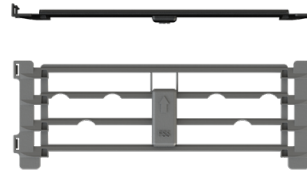
CUL-DE-SAC SHIELD (CSS)

- Flat-black, injection molded plastic resin
- Tool-less, clip-on discrete shield
- Blocks light to left and right of the fixture



FRONT SIDE SHIELD (FSS)

- Flat-black, injection molded plastic resin
- Tool-less, clip-on discrete shield
- Blocks light in front of the fixture.



SCOOP SHIELD (SS)

- Flat-black, injection-molded plastic resin
- Tool-less, clip-on discrete shield
- Blocks light behind the fixture (4WS only)



CONTROLS

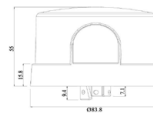
0-10 V ZHAGA OPTIONS

- ZT1: Ambient Light Control
- ZT3: IR + Ambient Light Control
- ZT4: Occupancy + IR + Ambient Light Control
- ZT5: 0-10V Zhaga Casambi BLE + ALC



PHOTOCELL OPTIONS

- PCL01: 120-277V Photocell (640J, IP65); Blue
- PCL02: 120-277V Photocell (1280J, IP66); Blue
- PCL03: 347-480V Photocell (1280J, IP66); Yellow
- PCL04: 50% Midnight Dimming, 347-480V Photocell (1280J, IP65); Brown
- PCL05: 50% Midnight Dimming, 120-277V Photocell (1280J, IP65); Brown



PROJECT _____

TYPE _____

LED BROADLITE (GEN 2) FLOOD LIGHT FIXTURE

Performance Package	ANSI Power (Watts) @120V	Drive Current	Color Temp. (CCT)	Input Power (Watts)	TYPE NEMA 6x6 (N66) AT 70 CRI			TYPE NEMA 7x5 (N75) AT 70 CRI		
					Lumens	Efficacy (lm/W)	Max Candela	Lumens	Efficacy (lm/W)	Max Candela
3H	20	250mA	5000K	21.0	3,681	175	1,510	3,601	171	2,770
			4000K		3,645	173	1,495	3,565	170	2,742
			3000K		3,499	166	1,435	3,423	163	2,632
4H	30	300mA	5000K	25.4	4,401	173	1,805	4,305	169	3,311
			4000K		4,357	171	1,787	4,262	168	3,278
			3000K		4,183	164	1,716	4,091	161	3,147
5H	30	375mA	5000K	32.6	5,493	168	2,253	5,373	165	4,132
			4000K		5,439	167	2,232	5,320	163	4,091
			3000K		5,221	160	2,141	5,107	157	3,928
6H	40	483mA	5000K	42.7	6,948	163	2,850	6,796	159	5,227
			4000K		6,879	161	2,821	6,729	158	5,175
			3000K		6,604	155	2,709	6,459	151	4,968
7H	50	585mA	5000K	52.5	8,212	156	3,368	8,033	153	6,178
			4000K		8,131	155	3,336	7,954	151	6,117
			3000K		7,806	149	3,201	7,635	145	5,872
8H	60	672mA	5000K	61.2	9,253	151	3,795	9,051	148	6,961
			4000K		9,161	150	3,758	8,961	146	6,892
			3000K		8,795	144	3,607	8,603	141	6,616
9H	70	725mA	5000K	66.2	9,808	148	4,024	9,594	145	7,379
			4000K		9,711	147	3,983	9,499	144	7,306
			3000K		9,323	141	3,824	9,119	138	7,014
11H	80	924mA	5000K	81.5	11,990	147	4,918	11,728	144	9,020
			4000K		11,871	146	4,870	11,612	142	8,931
			3000K		11,396	140	4,674	11,147	137	8,573
12H	90	1029mA	5000K	90.8	12,962	143	5,317	12,679	140	9,752
			4000K		12,834	141	5,264	12,554	138	9,655
			3000K		12,321	136	5,054	12,052	133	9,269
13H	100	1134mA	5000K	100.6	13,947	139	5,721	13,642	136	10,492
			4000K		13,809	137	5,664	13,507	134	10,388
			3000K		13,256	132	5,437	12,967	129	9,973
14H	110	1281mA	5000K	114.6	15,217	133	6,242	14,885	130	11,448
			4000K		15,066	131	6,180	14,738	129	11,335
			3000K		14,464	126	5,933	14,148	123	10,881
16H	130	1449mA	5000K	130.8	16,510	126	6,772	16,150	124	12,421
			4000K		16,346	125	6,705	15,990	122	12,298
			3000K		15,693	120	6,437	15,350	117	11,806
16P	120	1365mA	5000K	122.9	16,966	138	6,481	16,434	134	1,673
			4000K		16,798	137	6,417	16,271	132	10,567
			3000K		16,126	131	6,161	15,620	127	10,144
18P	140	1608mA	5000K	143.2	18,792	131	7,179	18,203	127	11,821
			4000K		18,606	130	7,108	18,023	126	11,704
			3000K		17,861	125	6,824	17,302	121	11,236
20P	160	1709mA	5000K	164.4	20,469	125	7,820	19,827	121	12,876
			4000K		20,266	123	7,742	19,631	119	12,749
			3000K		19,455	118	7,433	18,846	115	12,239