

PROJECT

TYPE

SPECIFIER

MEMO

ORDERING CODE BREAKDOWN

BARITONE NEW CONSTRUCTION 4" ROUND + SQUARE DOWNLIGHT

MAIN FEATURES

- Designed for new construction installations
- Delivering up to 4000 lumens at 3500K, 90+ CRI and 41W
- Modular platform with easy maintenance for individual components featuring visual indicator to ensure proper installation prior to module installation.
- Solais' proprietary driver technology delivers smooth, flicker-free dimming (per IEEE 1789-2015) to 1% via phase-cut or 0-10V
- Custom TIR optic platform to ensure excellent light control
- Super-shallow installation height of <2.5" and non-conductive baffles
- **Swift Ship** product codes available to ship in 2 days or less!



Round and square with (SD/PW)
Specular Baffle + White Flange



+											
FIXTURE	MODULE	CEILING THICKNESS	BAFFLE	FLANGE	BEAM SPREAD	CRI	CCT	LUMENS	POWER SUPPLY	HANGER BARS	FIELD OPTIONS
BDLR : Round	4 : 4"	1 : 0.50"-1.5"	PW : Perfect White	PW : Perfect White	NSP : Narrow Spot (15°)	9 : 90+ CRI	27 : 2700K	1000 : 10W	UNV2 : 120-277V (1000-1500 lm)	HB : Standard Hanger Bars	CAS10 : 0-10V Casambi Wireless Node
BDLS : Square			BK : Black	BK : Black	NFL : Narrow Flood (25°)		30 : 3000K	1500 : 15W	UNV2-EM : 120-277V (1000-1500 lm), integrated 10W EM	CHB : Commercial Hanger Bars	CASPC : Phase-cut Casambi Wireless Node
			SD : Semi-diffused	SD : Semi-diffused	FL : Flood (40°)		35 : 3500K	2000 : 20W	UNV3 : 120-277V (2000-2500 lm)		
					WFL : Wide Flood (60°)		40 : 4000K	2500 : 26W	UNV3-EM : 120-277V (2000-2500 lm), integrated 10W EM		
							50 : 5000K	3000 : 33W	UNV4 : DALI/D4i 120-277V		
							3500 : 40W	UNV4-EM : DALI-2/D4i 120-277V and integrated 10W EM			
							4000 : 46W	UNV5 : 120-277V			
								UNV6-EM : 120-277V (3000+ lm) with EM			
								AWNDR : DALI-2/D4i 120-277V with integrated Lutron Athena Node			
								AWNRE-EM : DALI-2/D4i 120-277V with integrated Lutron Athena Node and 10W EM			

Notes: Emergency test switch must be remote mounted with SD flange finish
 UNV5 not available with integrated EM; External Micro-inverter option available. Non-IC only.
 CAS10 compatible with UNV2 driver
 CASPC compatible with UNV2, UNV3, and UNV5 drivers
 SwiftShip 2-day shipping options are denoted with orange highlight; visit solais.com/swiftship to confirm specific product code, availability, and terms.

OPTICS + PERFORMANCE

- 4 custom beam spreads available
 - Narrow Spot - 15°
 - Narrow Flood - 25°
 - Flood - 40°
 - Wide Flood - 60°
- Performance packages
 - 10W; 1000 lumens
 - 15W; 1500 lumens
 - 20W; 2000 lumens
 - 26W; 2500 lumens
 - 33W; 3000 lumens
 - 40W; 3500 lumens
 - 46W; 4000 lumens
- Color Temperatures
 - 90+ CRI Standard: 2700K, 3000K, 3500K, 4000K, 5000K
- Fixture life:
 - Full power: 50,000 hours
 - 75% power: 100,000 hours
 - Below 50% power: 125,000 hours
 - LED 90% lumen maintenance: 60,000 hours

TRIM + BAFFLE OFFERINGS

- Ceilings: gypsum, wood, t-bar, specialty, other
- Ceiling Thicknesses: ½" - 1 ½"
- Standard baffle + flange colors
 - White: RAL 9003
 - Black: RAL 9005
- Semi-diffused Specular
(semi-diffused specular flange only available with semi-diffused specular baffle)

CONSTRUCTION + FINISH

- Weight 3.75 lbs.
- Galvanized steel tray
- Single-piece die-cast aluminum heatsink powdercoated with polyester powder

POWER + CONTROLS

- Universal Input: 120-277V
- Proprietary Solais driver provides phase-cut or 0-10V dimming <1%
- Preinstalled 10W emergency battery backup with built-in, integral trim test switch option; no need for remote wiring
- Casambi and Lutron wireless controls available

RATINGS + CERTIFICATIONS

- IC rated up to 2500 lumens/22W (without enclosure), Non-IC 3000+ lumens/25+W
- ETL listed; conforming to UL safety standards
- Damp location rated
- Contain no lead or mercury

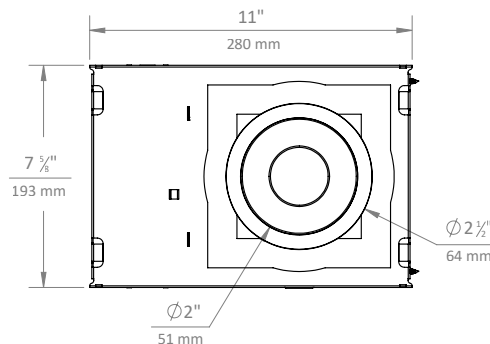
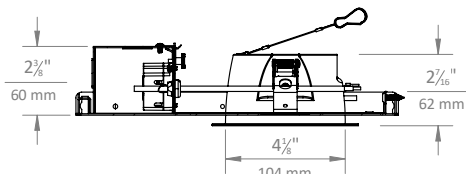
WARRANTY

- 5-year warranty

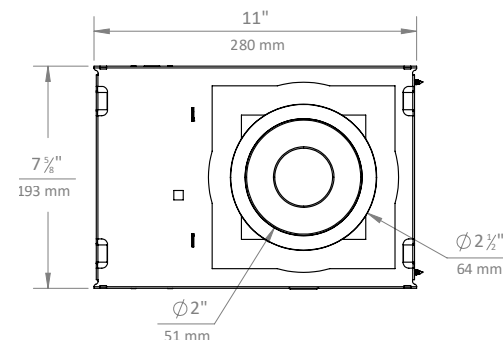
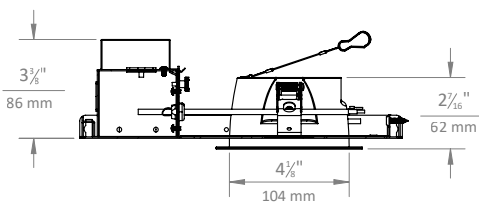
BDLR4 - ROUND DIMENSIONAL DETAILS

Ceiling Cutout : 4 ¾" Diameter

UNV2 (1000-1500 lm) + UNV3 (2000-2500 lm)



UNV5 (3000+ lm)



- HB Standard mounting brackets: 14" Minimum to 24" Maximum
- HBC Commercial mounting brackets: 10" Minimum to 24" Maximum with 2 3/4" vertical adjustment

BAFFLE + FLANGE DETAIL

Semi-Diffused Specular Baffle
+ Perfect White Flange
(SD/PW)

Perfect White
Baffle + Flange
(PW/PW)

Black
Baffle + Flange
(BK/BK)

Black Baffle +
Perfect White Flange
(BK/PW)

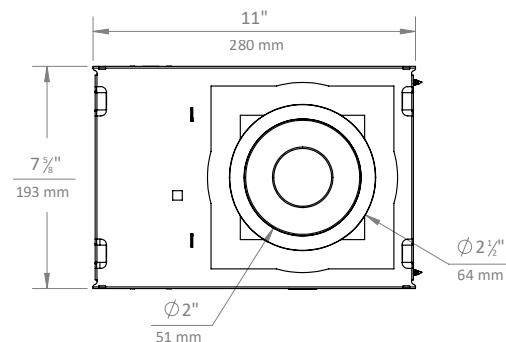
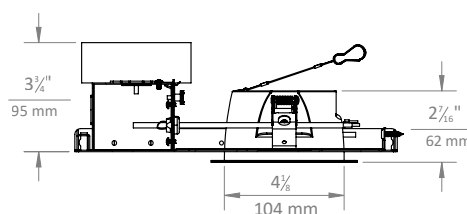
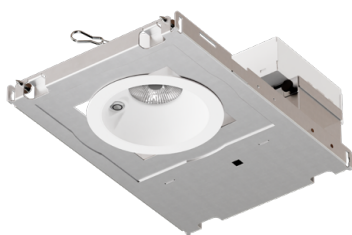
Semi-Diffused Specular
Baffle + Flange
(SD/SD)



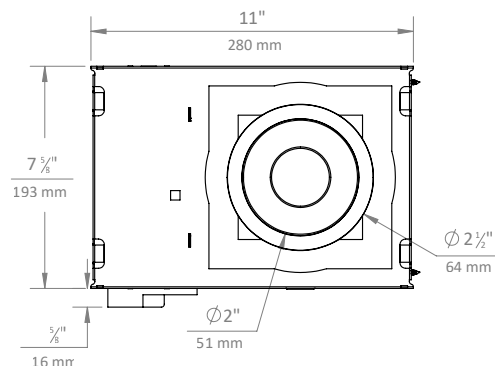
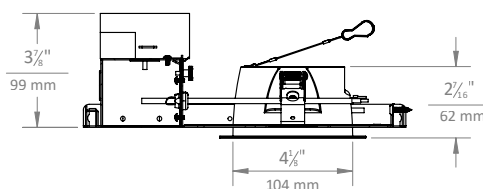
BDLR4 - ROUND DIMENSIONAL DETAILS (WITH EMERGENCY BATTERY BACKUP)

Ceiling Cutout : 4 3/8" Diameter

UNV2 (1000-1500 lm) + UNV3 (2000-2500 lm)



UNV5 (3000+ lm)



- HB Standard mounting brackets: 14" Minimum to 24" Maximum
- HBC Commercial mounting brackets: 10" Minimum to 24" Maximum with 2 3/4" vertical adjustment

BAFFLE + FLANGE DETAIL (WITH INTEGRAL EM)

Semi-Diffused Specular Baffle
+ Perfect White Flange
(SD/PW)

Perfect White
Baffle + Flange
(PW/PW)

Black
Baffle + Flange
(BK/BK)

Black Baffle +
Perfect White Flange
(BK/PW)

Semi-Diffused Specular
Baffle + Flange
(SD/SD)

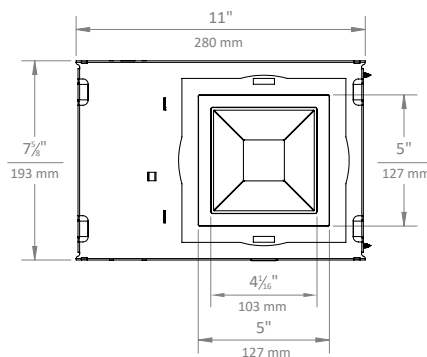
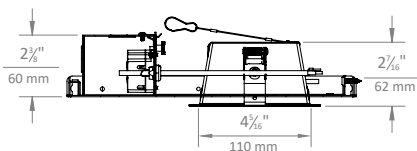


Remote EM required for
Semi-Diffused Specular
Baffle + Flange

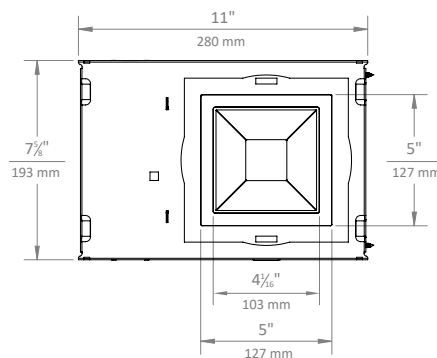
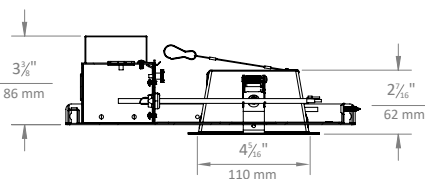
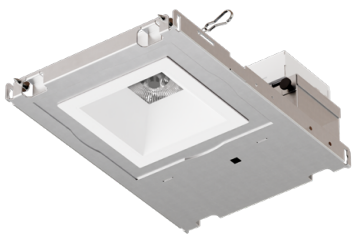
BDLS4 - SQUARE DIMENSIONAL DETAILS

Ceiling Cutout : 4 1/2" x 4 1/2"

UNV2 (1000-1500 lm) + UNV3 (2000-2500 lm)



UNV5 (3000+ lm)



- HB Standard mounting brackets: 14" Minimum to 24" Maximum
- HBC Commercial mounting brackets: 10" Minimum to 24" Maximum with 2 3/4" vertical adjustment

BAFFLE + FLANGE DETAIL

Semi-Diffused Specular Baffle
+ Perfect White Flange
(SD/PW)

Perfect White
Baffle + Flange
(PW/PW)

Black
Baffle + Flange
(BK/BK)

Black Baffle +
Perfect White Flange
(BK/PW)

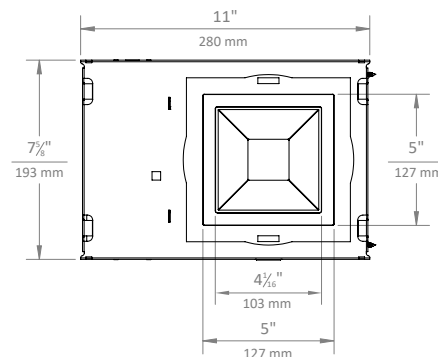
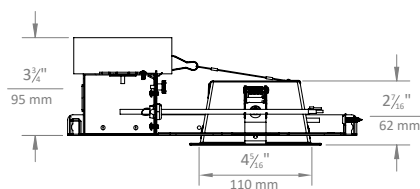
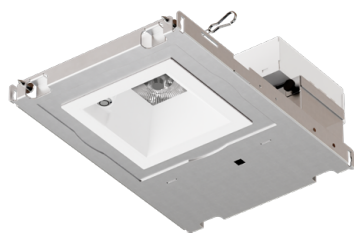
Semi-Diffused Specular
Baffle + Flange
(SD/SD)



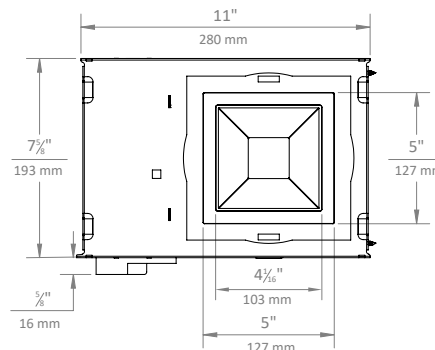
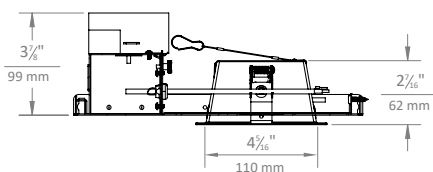
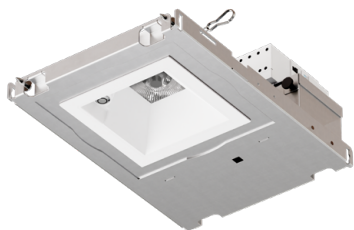
BDLS4 - SQUARE DIMENSIONAL DETAILS (WITH EMERGENCY BATTERY BACKUP)

Ceiling Cutout : 4 1/2" x 4 1/2"

UNV2 (1000-1500 lm) + UNV3 (2000-2500 lm)



UNV5 (3000+ lm)



- HB Standard mounting brackets: 14" Minimum to 24" Maximum
- HBC Commercial mounting brackets: 10" Minimum to 24" Maximum with 2 3/4" vertical adjustment

BAFFLE + FLANGE DETAIL (WITH INTEGRAL EM)

Semi-Diffused Specular Baffle
+ Perfect White Flange
(SD/PW)

Perfect White
Baffle + Flange
(PW/PW)

Black
Baffle + Flange
(BK/BK)

Black Baffle +
Perfect White Flange
(BK/PW)

Semi-Diffused Specular
Baffle + Flange
(SD/SD)



Remote EM required for
Semi-Diffused Specular
Baffle + Flange

PROJECT

TYPE

BARITONE NEW CONSTRUCTION 4" ROUND + SQUARE DOWNLIGHT

PHOTOMETRIC DETAILS | **baseline X output multiplier X cri-cct multiplier = final output**

Baseline data shown below for 20W, 2000 lumens, 90+ CRI , 3000K

NSP - 16° Narrow Spot

Input Power: 20.0 W
Lumens: 1787 lm
Efficacy: 89 lm/W
CBCP: 7389 cd
Beam Angle: 16.1°
Field Angle: 40.7°
Spacing Criteria: 0.28

∠	0°	45°	90°
0°	7337	7337	7337
5°	5107	5155	5834
10°	2152	2199	2827
15°	1092	1096	1281
20°	721	718	787
25°	506	508	548
30°	376	379	403
35°	273	276	294
40°	194	196	211
45°	135	138	151

NFL - 26° Spot

Input Power: 20.0 W
Lumens: 1683 lm
Efficacy: 84 lm/W
CBCP: 3486 cd
Beam Angle: 25.9°
Field Angle: 64.5°
Spacing Criteria: 0.46

∠	0°	45°	90°
0°	3478	3478	3478
5°	3118	3086	3246
10°	2172	2113	2410
15°	1216	1158	1401
20°	686	671	758
25°	483	477	517
30°	374	371	396
35°	290	287	310
40°	224	222	239
45°	174	172	186

FL - 43° Flood

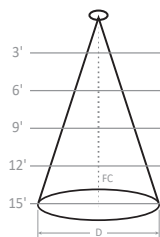
Input Power: 20.0 W
Lumens: 1804 lm
Efficacy: 90 lm/W
CBCP: 2395 cd
Beam Angle: 43.4°
Field Angle: 70.6°
Spacing Criteria: 0.79

∠	0°	45°	90°
0°	2392	2392	2392
5°	2339	2323	2346
10°	2192	2161	2215
15°	1878	1828	1937
20°	1338	1261	1440
25°	750	681	833
30°	394	360	438
35°	227	206	246
40°	137	126	149
45°	88	84	95

WFL - 55° Wide Flood

Input Power: 20.0 W
Lumens: 2074 lm
Efficacy: 104 lm/W
CBCP: 1815 cd
Beam Angle: 55.5°
Field Angle: 91.6°
Spacing Criteria: 1.05

∠	0°	45°	90°
0°	1806	1806	1806
5°	1738	1737	1771
10°	1605	1608	1668
15°	1430	1426	1515
20°	1197	1189	1293
25°	957	949	1053
30°	717	706	814
35°	466	453	547
40°	284	275	341
45°	165	157	200



0.85' D; 571 FC
1.70' D; 143 FC
2.55' D; 63 FC
3.39' D; 36 FC
4.24' D; 23 FC

1.38' D; 271 FC
2.75' D; 68 FC
4.13' D; 30 FC
5.51' D; 17 FC
6.88' D; 11 FC

2.38' D; 186 FC
4.77' D; 47 FC
7.15' D; 21 FC
9.54' D; 12 FC
11.92' D; 7 FC

3.16' D; 141 FC
6.31' D; 35 FC
9.47' D; 16 FC
12.63' D; 9FC
15.78' D; 6 FC

OUTPUT MULTIPLIER

Package	Multiplier
10W 1000 lm	0.54
15W 1500 lm	0.75
20W 2000 lm	1.00
26W 2500 lm	1.25
33W 3000 lm	1.53
40W 3500 lm	1.74
46W 4000 lm	1.91

CRI-CCT MULTIPLIER

CCT	90+ CRI
2700K	0.97
3000K	1.00
3500K	1.02
4000K	1.03
5000K	1.04