



IMPORTANT: Read **ALL** instructions before starting installation. Save instructions for later use.
CAUTION: To reduce risk of shock, **TURN OFF ELECTRICAL SUPPLY** before installing/servicing track.
WARNING: **TRACK** must be installed with its intended use and in accordance of National Electrical Code (NEC) and/or any local codes. *Failure to do so may result in serious injury and/or damage.*

Recommended Tools

Screw Driver



Wire Stripper



Wing Nuts



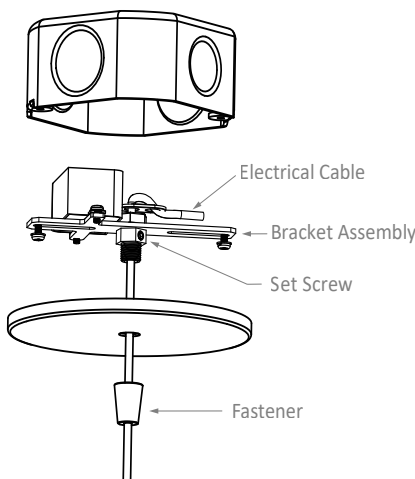
Safety Instructions

- Observe and follow all label information and instructions regarding dry, damp and wet location listings, proper lamp type and wattage, warnings of installation near combustible materials and/or insulation.
- Turn off power at circuit breaker before attempting to install or perform maintenance on the fixtures.
- Be sure to connect ground wire to prevent electric shock or other potential hazards.
- The product must be installed in a manner consistent with the intended use and in compliance with the national electrical codes and local codes.
- **WARNING: RISK OF FIRE.**

Most dwellings built before 1985 have supply wire rated for 60°C. Consult a qualified electrician before installation. The fixture must be connected with supply wire rated for at least 75°C.

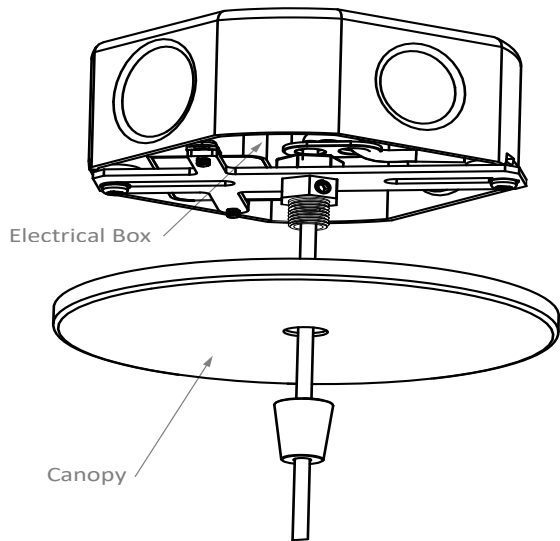
- Use only Solais Lighting components listed for use with this fixture. Use of components other than those listed by Solais Lighting is a violation of N.E.C. 110-3(B) and voids all warranties. Use **ONLY** with proper Solais Lighting modules.

Installation Instructions - Canopy Mount



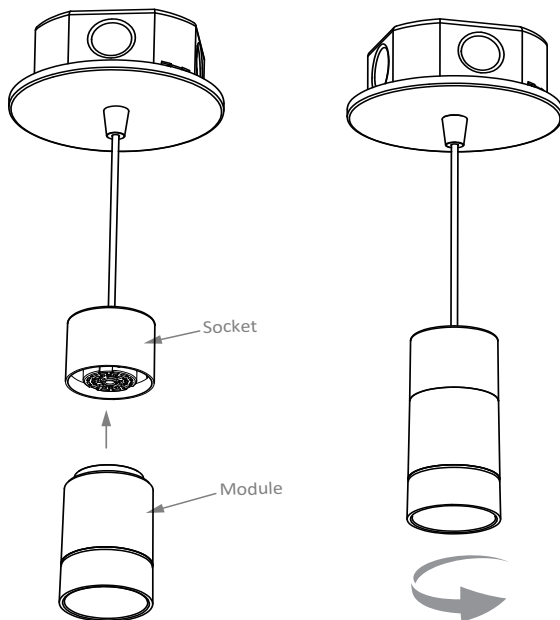
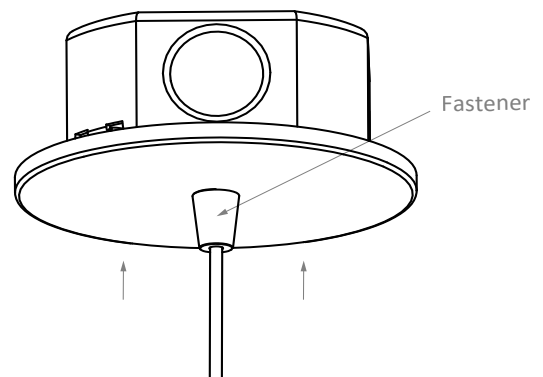
- Loosen fastener by rotating counter-clockwise in order to separate canopy from bracket assembly.
- Fasten bracket assembly to electrical box.
- If cable needs to be adjusted:
 - Disconnect output wiring.
 - Loosen setscrew.
 - Pull wire to desired length.
 - Fasten setscrew to lock desired length.
 - Cut excess wire in order for wiring to fit in electrical box.
 - Re-connect output wiring RED (+) to RED (+) and BLACK (-) to BLACK (-).

Installation Instructions - Canopy Mount



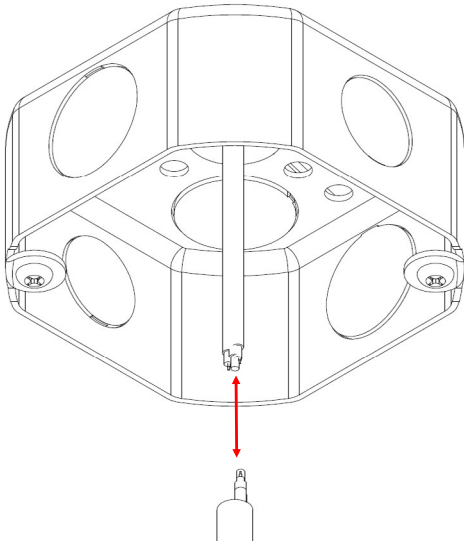
- Connect Line, Neutral, Ground and dimming connections as required.
- Fit wiring inside electrical box and assemble canopy.

- Move canopy to site flush with the ceiling.
- Secure canopy in place and tighten fastener by turning clockwise until secure.



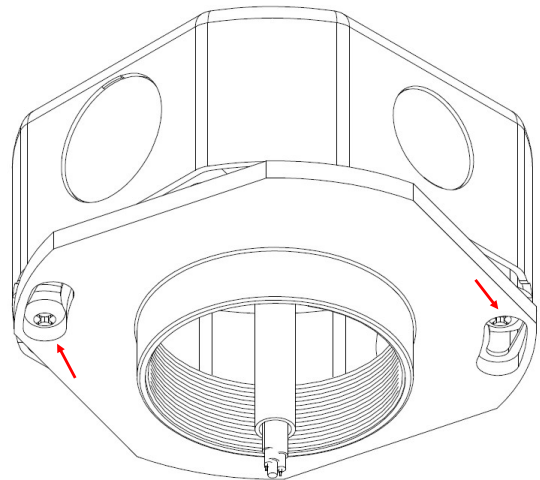
- Align module with socket, push and rotate clockwise until module snaps in place and is secured.

Installation Instructions - Surface Mount - Junction Box

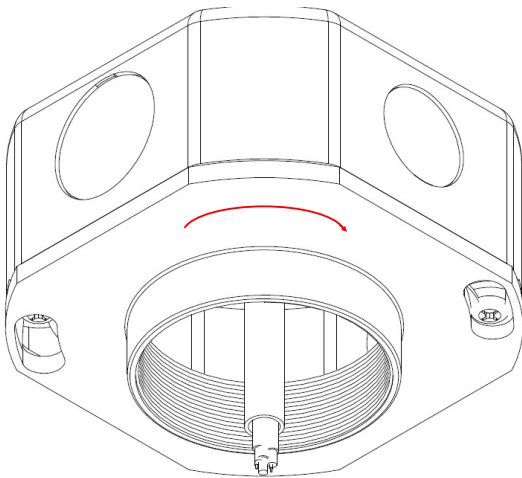


- Connect the included wire sleeve to the building wires.

- Fit the wiring sleeve inside the Junction Box Collar Aperture.
- Attach the Junction Box Collar through the larger side of the wide screw slots.

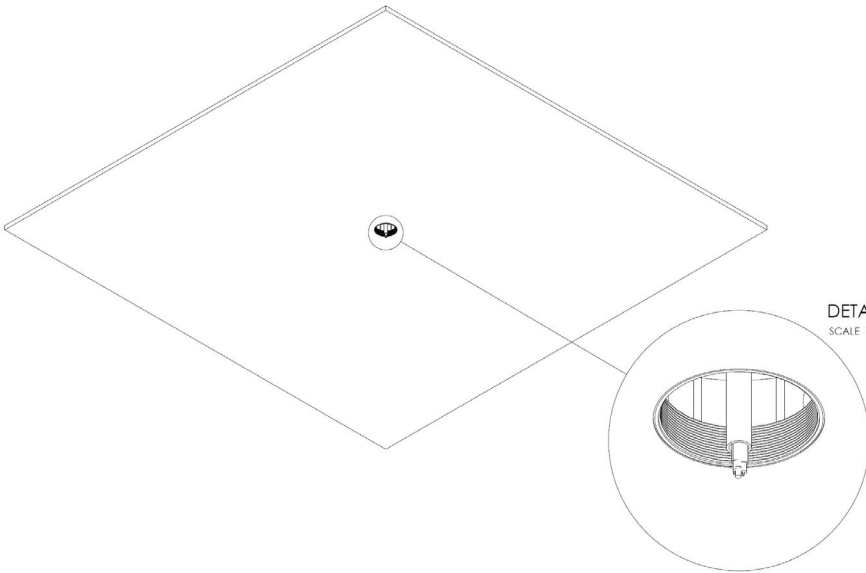


- Rotate the Junction Box Collar to move the Junction Box Screws to the smaller slot side.
- Fasten the screws to fully secure it.



MODULAR LUCIE PENDANT INSTALLATION INSTRUCTIONS

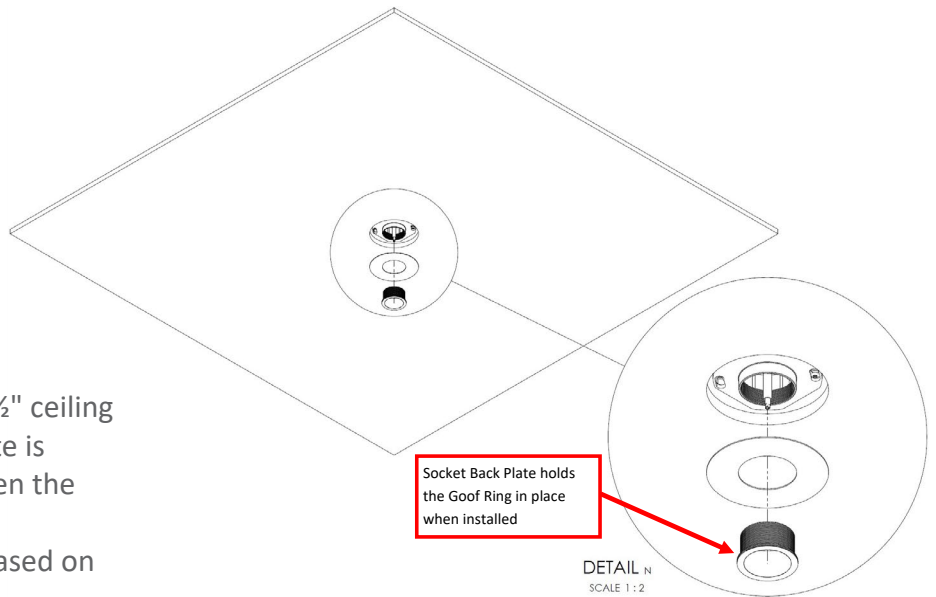
Installation Instructions - Surface Mount - Ceiling Cutout



- Make the ceiling cutout in the ceiling panel and fit it onto the Junction Box Collar. The sizes are listed below based on module size:

- Nano = \varnothing 1 ½"
- Small = \varnothing 2 ⅛"
- Medium = \varnothing 2 ½"

- **If branch wiring connections are needed for this fixture, do not make a ceiling cutout and proceed to the next page. The next step only applies for branch wiring connection installation.**



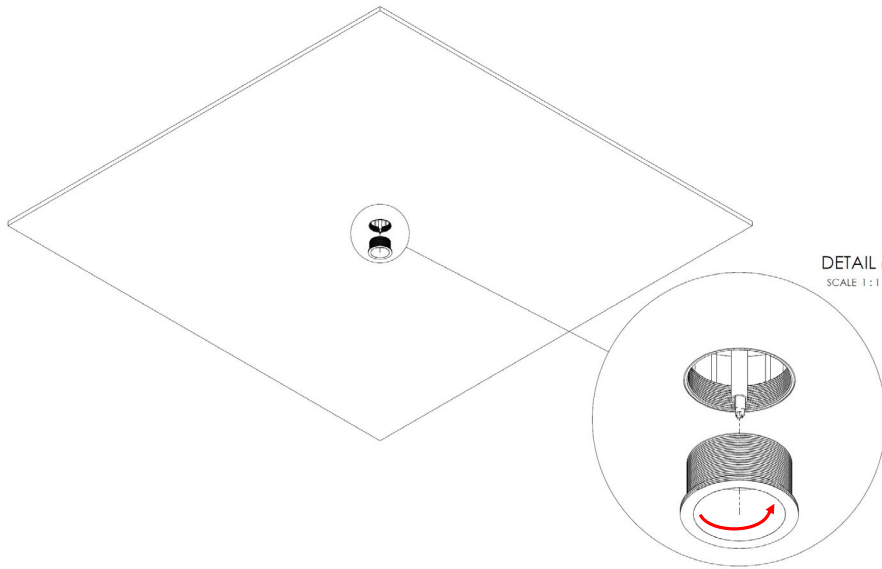
- For branch wiring connections, a \varnothing 4 ½" ceiling cutout is made instead. A goof ring plate is attached to fill the empty space between the ceiling cutout and Junction Box Collar.

- There are 3 different goof ring sizes based on the module size. They will all cover the 4 ½" Ceiling Cutout diameter, but the inner diameter varies:

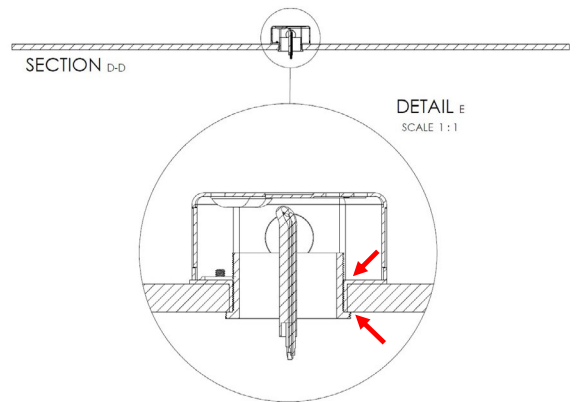
- Nano Module Goof Ring: 5008-000644
- Small Module Goof Ring: 5008-000645
- Medium Module Goof Ring: 5008-000646

MODULAR LUCIE PENDANT INSTALLATION INSTRUCTIONS

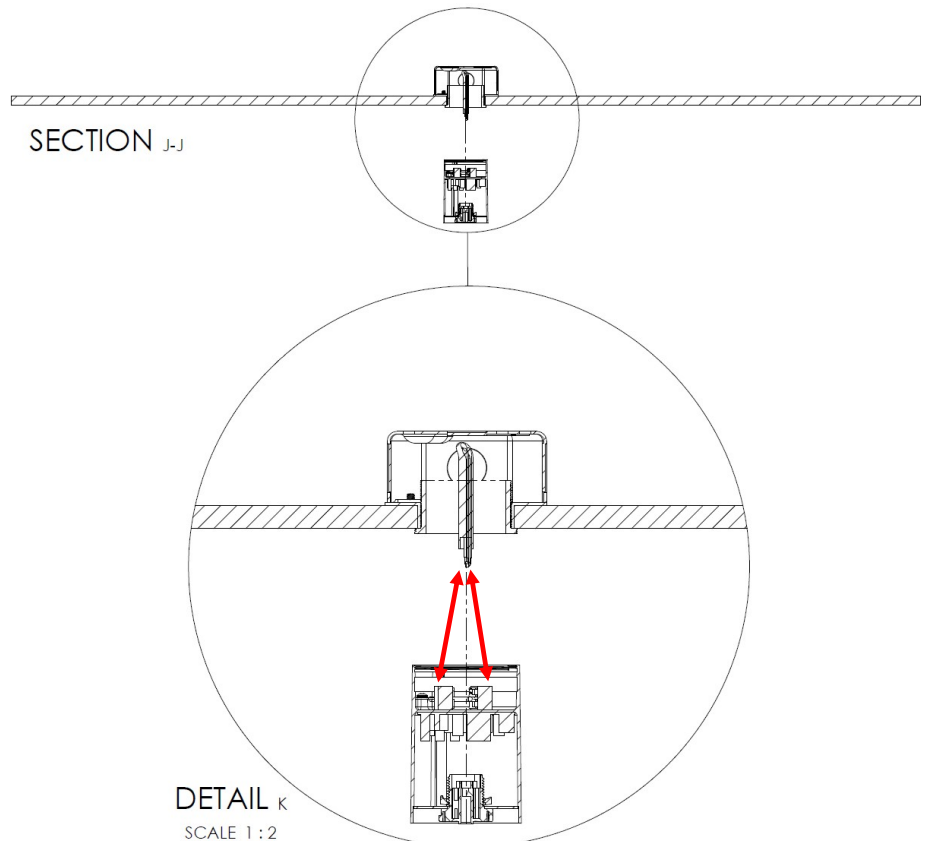
Installation Instructions - Surface Mount - Back Plate + Wiring



- Screw in the Socket Back Plate into the Junction Box Collar. Keep fastening the back plate until it can no longer turn and is completely secured.

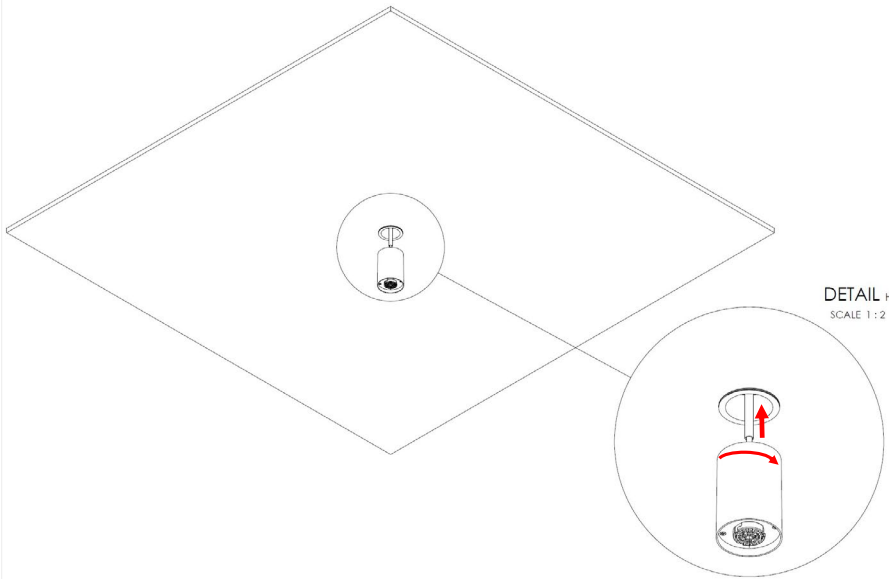


- Make the wiring connections from the wire harness to the socket. Wire connectors are already present inside the socket.



Installation Instructions - Surface Mount - Wiring + Module

- Secure the socket to the back plate after making wire connections. The socket fastens into the back plate through a screw thread.



- Secure the module into the socket. Once secure, the installation is complete.

