

# Glare Shield

FIXTURE MOUNTED AT 25 FT.

PROJECT \_\_\_\_\_

TYPE \_\_\_\_\_

SPECIFICATION \_\_\_\_\_

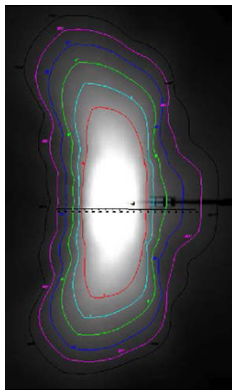
- Flat-black, powder-coated aluminum sheet metal glare shields
- Easy installation for effective light control
- Consult factory for availability and lead times
- Designed for use in the following EnergyLite product families:
  - GridLite
  - BroadLite

## ▪ GL4 GC Front/back Glare Shield

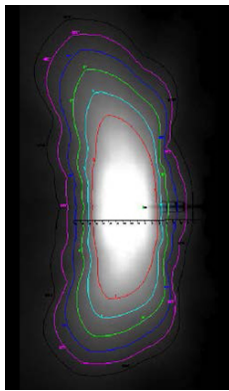


### TYPE II MEDIUM

▪ Without shield

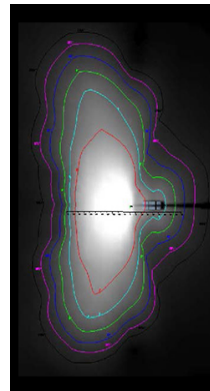


▪ With shield

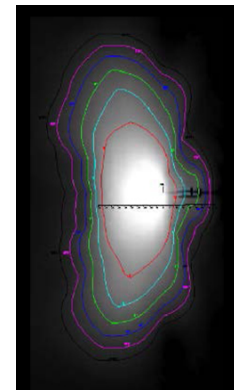


### TYPE III MEDIUM

▪ Without shield

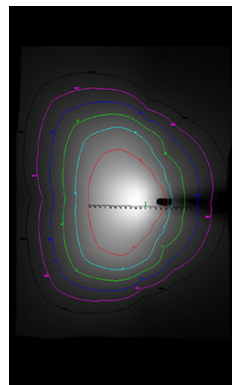


▪ With shield

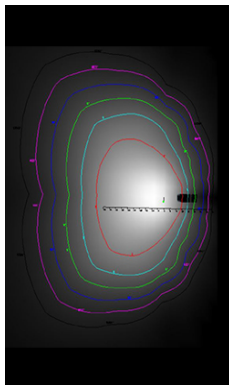


### TYPE IV SHORT

▪ Without shield

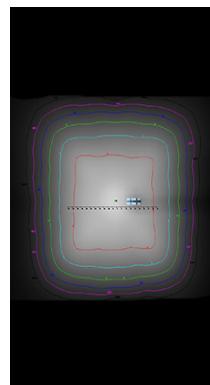


▪ With shield

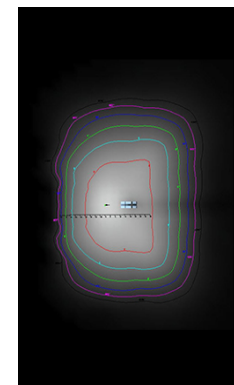


### TYPE V SQUARE

▪ Without shield



▪ With shield



# Glare Shield

FIXTURE MOUNTED AT 25 FT.

PROJECT \_\_\_\_\_

TYPE \_\_\_\_\_

SPECIFICATION \_\_\_\_\_

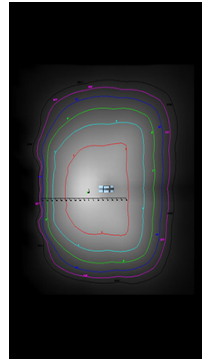
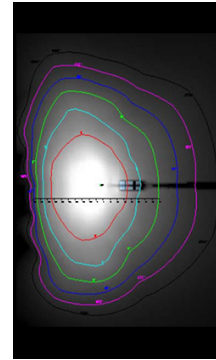
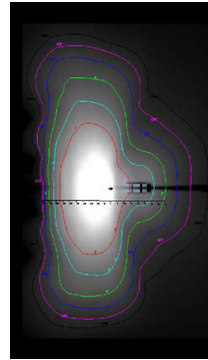
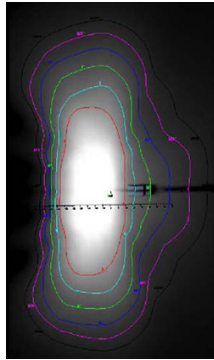
## GL4 GC Front/back Glare Shield

TYPE II MEDIUM

TYPE III MEDIUM

TYPE IV MEDIUM

TYPE V MEDIUM



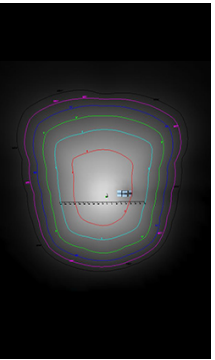
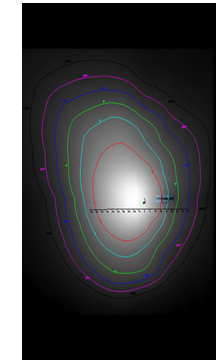
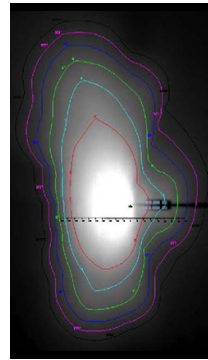
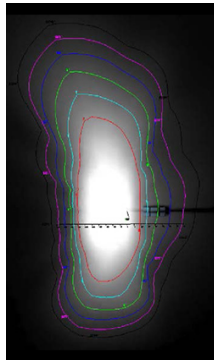
## GL4 GA Side Glare Shield

TYPE II MEDIUM

TYPE III MEDIUM

TYPE IV MEDIUM

TYPE V MEDIUM



## GL4 GA Side Glare Shield

TYPE II MEDIUM

TYPE III MEDIUM

TYPE IV MEDIUM

TYPE V MEDIUM

