

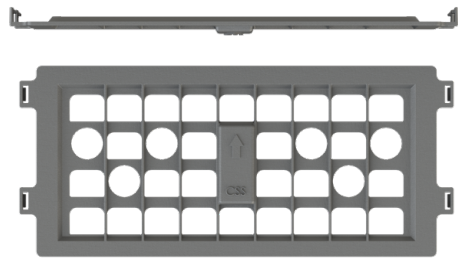
CSS Cul-de-sac Shield

FIXTURE MOUNTED AT 25 FT.

PROJECT _____

TYPE _____

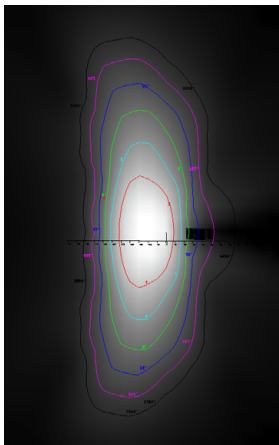
SPECIFICATION _____



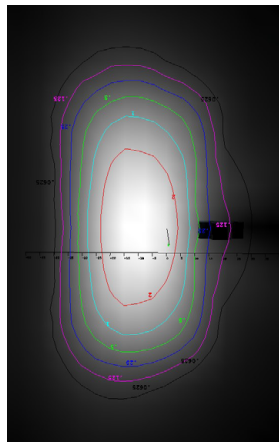
- Flat-black, injection molded plastic resin
- Tool-less, clip-on discrete shield
- Used to control unwanted light in residential areas
- Designed for use in the following EnergyLite product families:
 - GridLite
 - BroadLite
 - HawkLite

TYPE II MEDIUM

▪ Without Shield

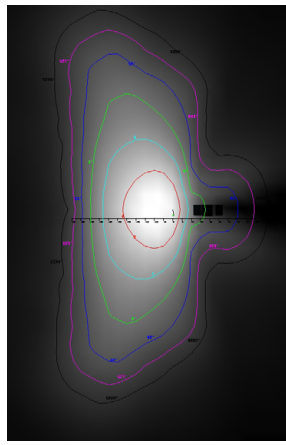


▪ With Shield

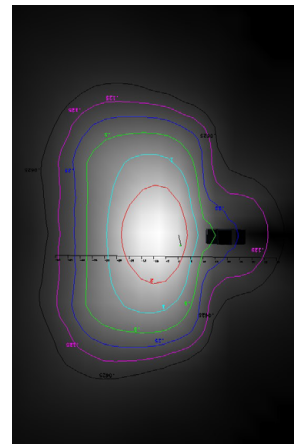


TYPE III MEDIUM

▪ Without Shield

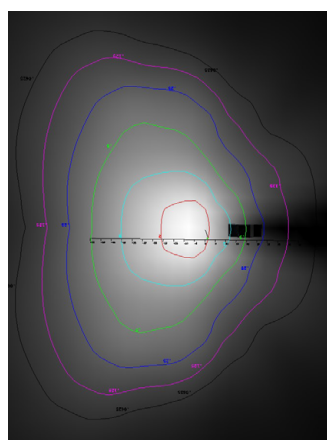


▪ With Shield

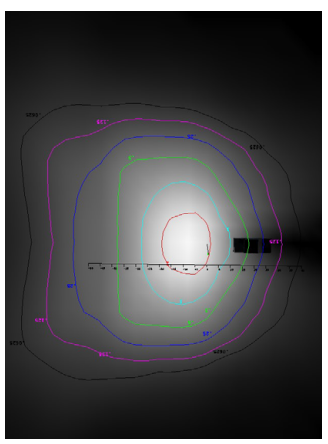


TYPE IV SHORT

▪ Without Shield

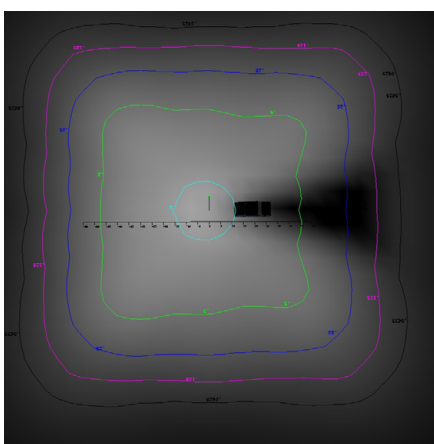


▪ With Shield



TYPE V SQUARE

▪ Without Shield



▪ With Shield

