

STRETTA | ST2_A

INSTALLATION INSTRUCTIONS



IMPORTANT: Read **ALL** instructions before starting installation. Save instructions for later use.
CAUTION: To reduce risk of shock, **TURN OFF ELECTRICAL SUPPLY** before installing/servicing track.
WARNING: **TRACK** must be installed with its intended use and in accordance of National Electrical Code (NEC) and/or any local codes. *Failure to do so may result in serious injury and/or damage.*

Recommended Tools

Screw Driver



Wire Stripper



Wing Nuts



Safety Instructions

- Observe and follow all label information and instructions regarding dry, damp and wet location listings, proper lamp type and wattage, warnings of installation near combustibile materials and/or insulation.
- Turn off power at circuit breaker before attempting to install or perform maintenance on the fixtures.
- Be sure to connect ground wire to prevent electric shock or other potential hazards.
- The product must be installed in a manner consistent with the intended use and in compliance with the national electrical codes and local codes.
- Do not block the trim aperture as this may cause unsafe operating conditions.
- **WARNING: RISK OF FIRE.** Most dwellings built before 1985 have supply wire rated for 60°C. Consult a qualified electrician before installation. The fixture must be connected with supply wire rated for at least 75°C.
- Use only Solais Lighting trims listed for use with this fixture. Use of trims other than those listed by Solais Lighting is a violation of N.E.C 110-3(B) and voids all warranties. Use **ONLY** with proper Solais Lighting modules.

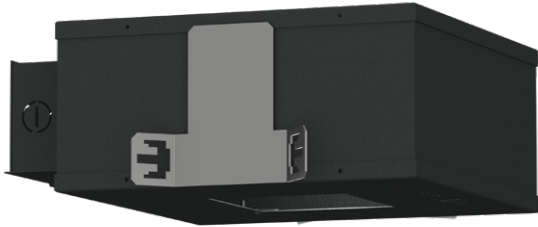


STRETTA | ST2_A

INSTALLATION INSTRUCTIONS

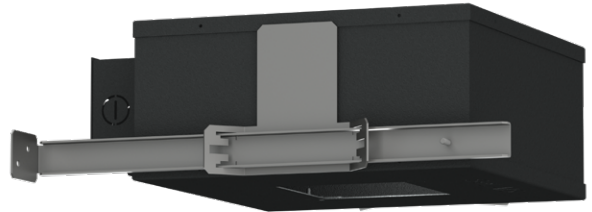


STEP BY STEP INSTRUCTIONS



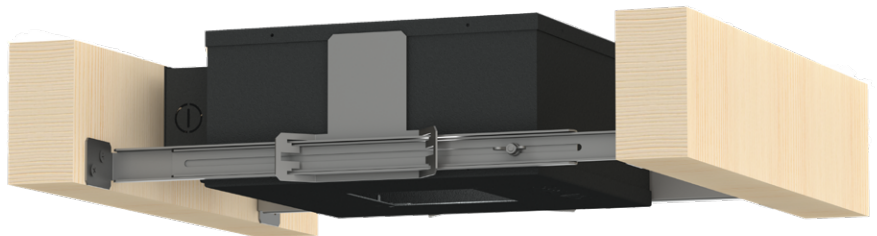
- 1) Remove items from packaging to prepare for installation

- 2) • Remove the wingnut and washer from the mounting bars.
• Push the outer slide of the mounting bar assembly through the butterfly bracket.



- 3) • Push the inner slide through the bracket, adjust for length and then secure with the washer and wingnut.
• Repeat on the other side of the housing.

- 4) Screw the mounting bars into the ceiling joists.

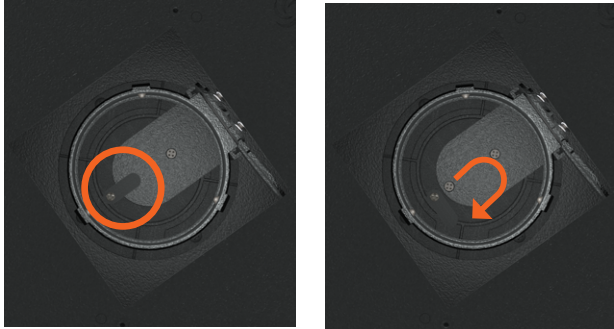


STRETTA | ST2_A

INSTALLATION INSTRUCTIONS

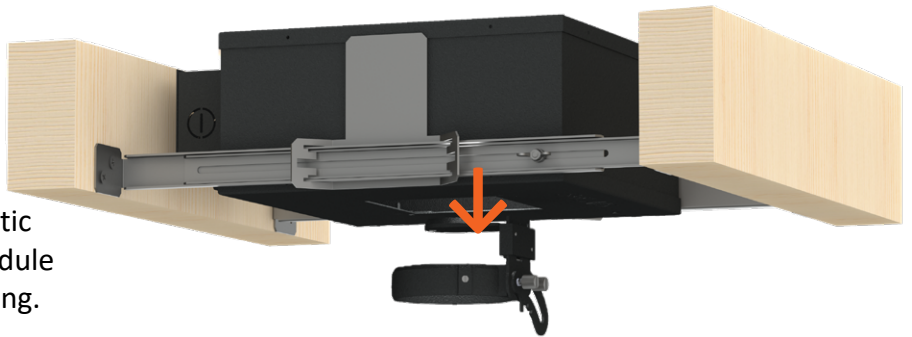


STEP BY STEP INSTRUCTIONS CONTINUED...



5) Rotate the tab to unlock the module holder assembly.

6) Pull down to release the magnetic connection and remove the module holder assembly from the housing.



7) • Remove the cardboard packaging from inside the housing.
• Then, push up on the two tabs to release the driver door assembly.
• Pull the driver door assembly away from the electrical compartment and remove the assembly from the housing.

8) • Knock out hole at the back of the electrical compartment.
• Pull power wires through the knockout and through the aperture.
• Connect power wires to driver.
• Line to line, neutral to neutral and ground to ground using UL certified connectors.



STEP BY STEP INSTRUCTIONS CONTINUED...

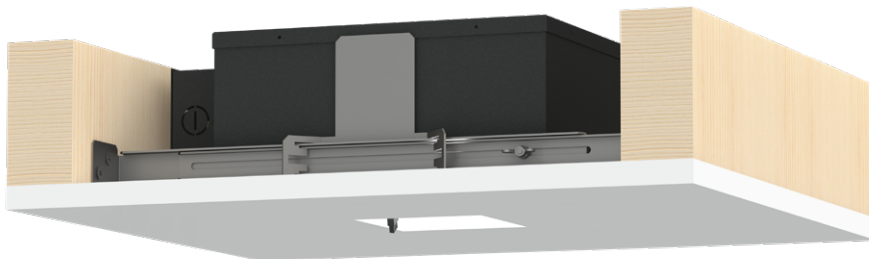
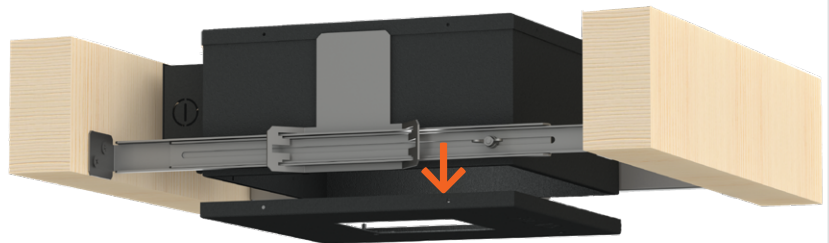


- 9)
- Push the driver assembly back through the aperture with the tab facing up.
 - Make sure all wiring is secured within the electrical compartment.
 - Push the assembly back into place until it clicks and the gasket is sealing the compartment.

* *There is a maintenance indicator visible through the aperture. If the fixture is not functioning at any time after installation is complete, check the indicator. If the light is on, the driver remains functional but the module may need service. If the light is off, the driver requires service.*

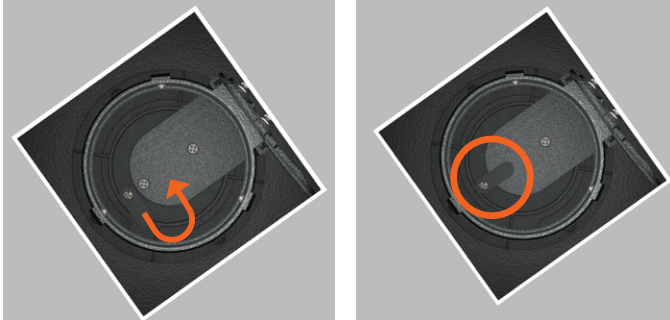
- 10)
- Using the opening in the housing as a guide, cut the aperture in the ceiling.

- It is optional to remove the bottom plate from the housing to do this step.
- To remove the plate, gently push in on the side of the housing and pull down on the plate.
- To replace the plate push up on the plate until it clicks to lock onto the housing.



- 11) Install the ceiling

STEP BY STEP INSTRUCTIONS CONTINUED...

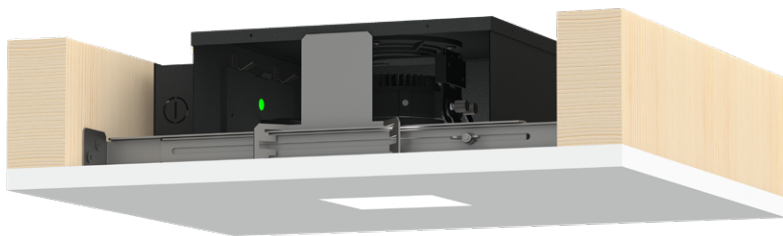


- 12)**
- Place the module holder back in the housing, ensuring it sits properly over the magnet.
 - Rotate the tab back into place.

- 13)**
- Route the cable coming from the driver assembly through the center of the module holder.
 - Use the quick connect to connect the module to the assembly.



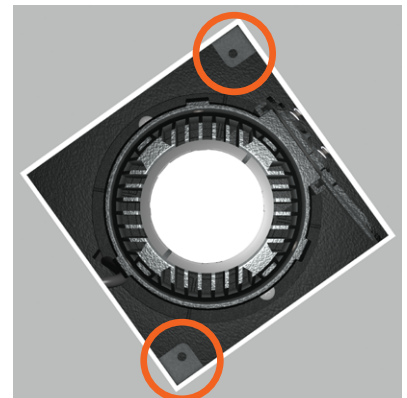
* *Module connection/installation can be performed after collar installation has been finished.*



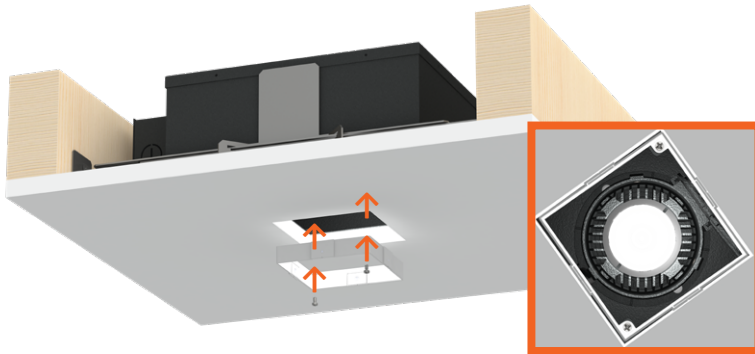
- 14)**
- Push the module through the aperture into the module holder until it clicks.

- 15)**
- Rotate the tabs by reaching inside the bottom panel to prepare for collar/ mud flange mount.

- * *For installation of a flanged fixture continue with step 16.*
- * *For installation of all millwork fixtures, continue with step 16.*
- * *For installation of a flangeless fixture, skip to step 19.*

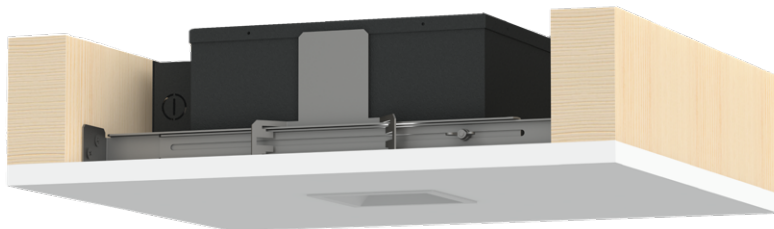
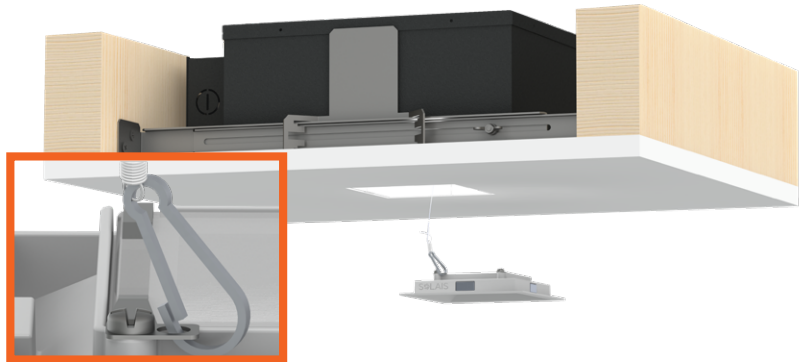


STEP BY STEP INSTRUCTIONS CONTINUED...



16) Screw the collar into the tabs on the housing using the screws provided on the collar.

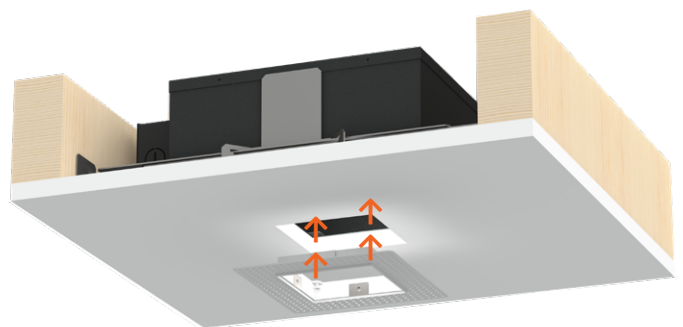
17) Secure trim by hooking the snap on the safety chain through the circular cutout next to the screw on the trim.



18) • Push trim up into collar until secure.
• Installation complete for flanged fixture.

* *Continuation of flangeless fixture installation.*

19) Screw the mud flange into the tabs on the housing using the screws provided on the mud flange.

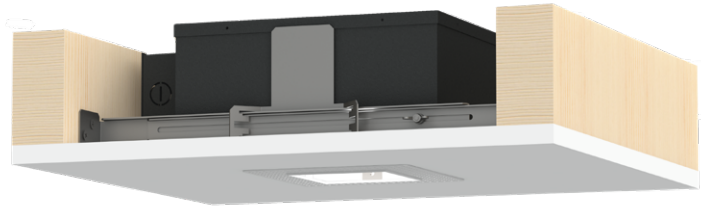


STRETTA | ST2_A

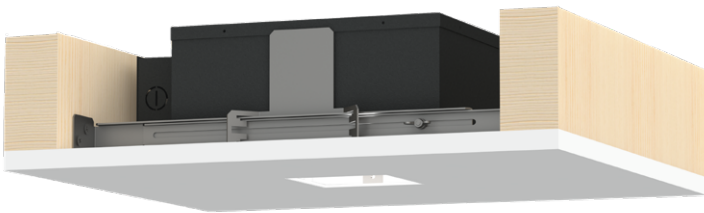
INSTALLATION INSTRUCTIONS



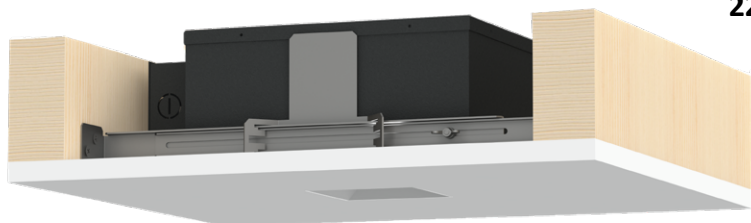
STEP BY STEP INSTRUCTIONS CONTINUED...



20) Apply mudding over flange for A seamless look.



21) Secure trim by hooking the snap on the safety chain through the circular cutout next to the screw on the trim.



22) • Push trim up into mud flange until secure.
• Installation complete for flangeless fixture.

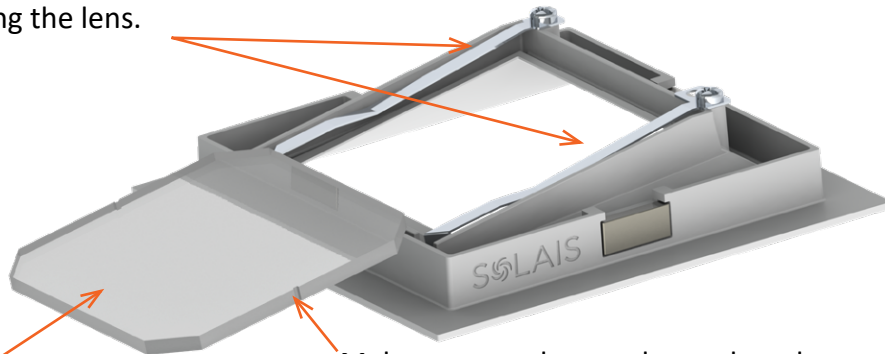
STRETTA | ST2_A

INSTALLATION INSTRUCTIONS



ACCESSORY INSTRUCTIONS

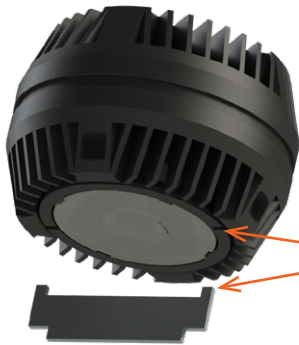
Lift 2 springs and insert lens. Make sure the springs do not scratch the lens during installation by lifting them enough so that there is enough space for installing the lens.



Make sure texture side faces the inside of the housing.

Make sure notches are located on the same side of the springs.

MODULE INSTRUCTIONS



Align tool with optic holder slots and twist in order to remove optic.



Place accessory in clip and proceed to snap 4 sides to module built in pockets in order to secure.