

## Bullhorn POLE TOP LUMINAIRE

PROJECT \_\_\_\_\_

TYPE \_\_\_\_\_

SPECIFICATION \_\_\_\_\_

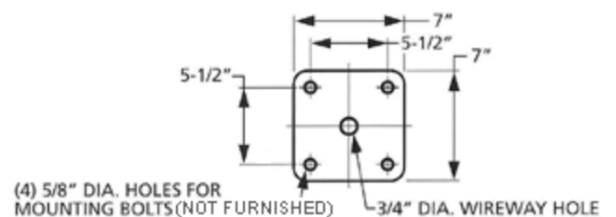
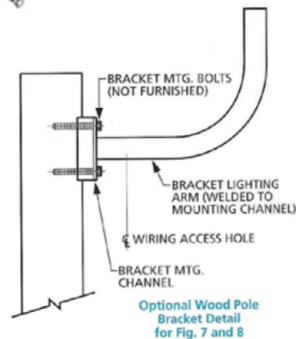
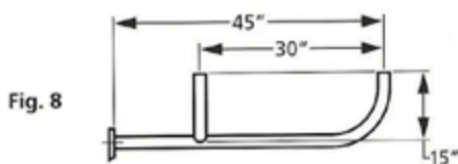
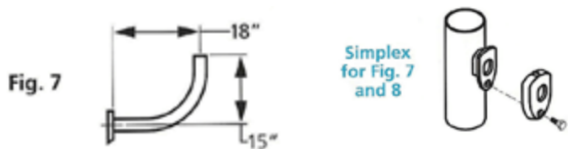
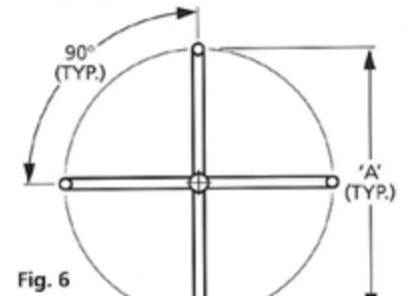
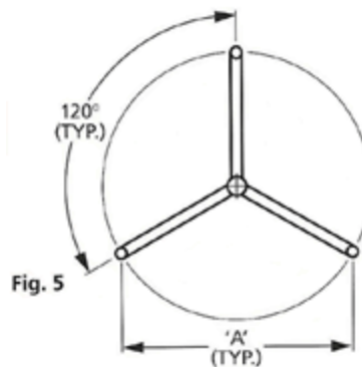
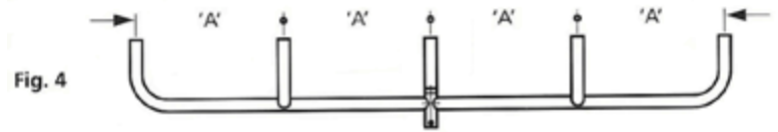
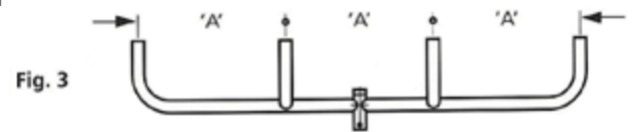
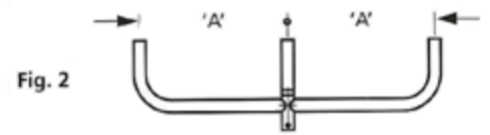
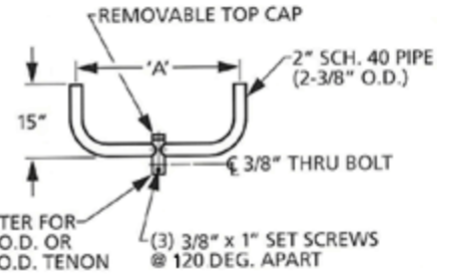
Pole top luminaire mounting adaptors  
Figure 2, 3, and 4 are available in 30" and 36"  
Figure 6 available in 36" and 48"

# OF LUMINAIRES  
SERIES ORIENTATION ARM SPREAD SLIPFITTER FINISH POLE TENON SIZE

**FA 2180 - 36 - 2 - BRZ - 2**

2 - 2 3/8" O.D. Tenon  
BRZ - Bronze  
BLK - Black  
G - Galvanized  
NA - Natural Aluminum  
2 - 2 3/8" O.D. Tenon  
3.5 - 3 1/2" O.D. Tenon

Figure Number	Catalog Number	# of Arms	Arm Spread (in.)	EPA	Weight
1	FA2180-36	2 @ 180°	36	1.6	30
2	FA3180-36	3 @ 180°	36	2.3	44
2	FA3180-30	3 @ 180°	30	2.3	44
3	FA4180-36	4 @ 180°	36	2.6	59
3	FA4180-30	4 @ 180°	30	2.6	59
4	FA5180-36	5 @ 180°	36	3.4	68
4	FA5180-30	5 @ 180°	30	3.4	68
5	FA3120-30	3 @ 120°	30	1.6	39
6	FA4090-36	4 @ 90°	36	1.9	55
6	FA4090-48	4 @ 90°	48	1.9	55
7	FA1000-18	1	18	0.5	12
8	FA2000-30	2	30	1.1	24



Note: EPA & Weight Measurements reflect Maximum Arm Spread.